



TABLE OF CONTENTS

NO.	DESCRIPTION	DISCIPLINE
1	GENERAL NOTES	
2	GENERAL NOTES	
3	GENERAL NOTES	
4	GENERAL NOTES	
5	GENERAL NOTES	
6	GENERAL NOTES	
7	GENERAL NOTES	
8	GENERAL NOTES	
9	GENERAL NOTES	
10	GENERAL NOTES	
11	GENERAL NOTES	
12	GENERAL NOTES	
13	GENERAL NOTES	
14	GENERAL NOTES	
15	GENERAL NOTES	
16	GENERAL NOTES	
17	GENERAL NOTES	
18	GENERAL NOTES	
19	GENERAL NOTES	
20	GENERAL NOTES	
21	GENERAL NOTES	
22	GENERAL NOTES	
23	GENERAL NOTES	
24	GENERAL NOTES	
25	GENERAL NOTES	
26	GENERAL NOTES	
27	GENERAL NOTES	
28	GENERAL NOTES	
29	GENERAL NOTES	
30	GENERAL NOTES	
31	GENERAL NOTES	
32	GENERAL NOTES	
33	GENERAL NOTES	
34	GENERAL NOTES	
35	GENERAL NOTES	
36	GENERAL NOTES	
37	GENERAL NOTES	
38	GENERAL NOTES	
39	GENERAL NOTES	
40	GENERAL NOTES	
41	GENERAL NOTES	
42	GENERAL NOTES	
43	GENERAL NOTES	
44	GENERAL NOTES	
45	GENERAL NOTES	
46	GENERAL NOTES	
47	GENERAL NOTES	
48	GENERAL NOTES	
49	GENERAL NOTES	
50	GENERAL NOTES	
51	GENERAL NOTES	
52	GENERAL NOTES	
53	GENERAL NOTES	
54	GENERAL NOTES	
55	GENERAL NOTES	
56	GENERAL NOTES	
57	GENERAL NOTES	
58	GENERAL NOTES	
59	GENERAL NOTES	
60	GENERAL NOTES	
61	GENERAL NOTES	
62	GENERAL NOTES	
63	GENERAL NOTES	
64	GENERAL NOTES	
65	GENERAL NOTES	
66	GENERAL NOTES	
67	GENERAL NOTES	
68	GENERAL NOTES	
69	GENERAL NOTES	
70	GENERAL NOTES	
71	GENERAL NOTES	
72	GENERAL NOTES	
73	GENERAL NOTES	
74	GENERAL NOTES	
75	GENERAL NOTES	
76	GENERAL NOTES	
77	GENERAL NOTES	
78	GENERAL NOTES	
79	GENERAL NOTES	
80	GENERAL NOTES	
81	GENERAL NOTES	
82	GENERAL NOTES	
83	GENERAL NOTES	
84	GENERAL NOTES	
85	GENERAL NOTES	
86	GENERAL NOTES	
87	GENERAL NOTES	
88	GENERAL NOTES	
89	GENERAL NOTES	
90	GENERAL NOTES	
91	GENERAL NOTES	
92	GENERAL NOTES	
93	GENERAL NOTES	
94	GENERAL NOTES	
95	GENERAL NOTES	
96	GENERAL NOTES	
97	GENERAL NOTES	
98	GENERAL NOTES	
99	GENERAL NOTES	
100	GENERAL NOTES	
101	GENERAL NOTES	
102	GENERAL NOTES	
103	GENERAL NOTES	
104	GENERAL NOTES	
105	GENERAL NOTES	
106	GENERAL NOTES	
107	GENERAL NOTES	
108	GENERAL NOTES	
109	GENERAL NOTES	
110	GENERAL NOTES	
111	GENERAL NOTES	
112	GENERAL NOTES	
113	GENERAL NOTES	
114	GENERAL NOTES	
115	GENERAL NOTES	
116	GENERAL NOTES	
117	GENERAL NOTES	
118	GENERAL NOTES	
119	GENERAL NOTES	
120	GENERAL NOTES	
121	GENERAL NOTES	
122	GENERAL NOTES	
123	GENERAL NOTES	
124	GENERAL NOTES	
125	GENERAL NOTES	
126	GENERAL NOTES	
127	GENERAL NOTES	
128	GENERAL NOTES	
129	GENERAL NOTES	
130	GENERAL NOTES	
131	GENERAL NOTES	
132	GENERAL NOTES	
133	GENERAL NOTES	
134	GENERAL NOTES	
135	GENERAL NOTES	
136	GENERAL NOTES	
137	GENERAL NOTES	
138	GENERAL NOTES	
139	GENERAL NOTES	
140	GENERAL NOTES	
141	GENERAL NOTES	
142	GENERAL NOTES	
143	GENERAL NOTES	
144	GENERAL NOTES	
145	GENERAL NOTES	
146	GENERAL NOTES	
147	GENERAL NOTES	
148	GENERAL NOTES	
149	GENERAL NOTES	
150	GENERAL NOTES	
151	GENERAL NOTES	
152	GENERAL NOTES	
153	GENERAL NOTES	
154	GENERAL NOTES	
155	GENERAL NOTES	
156	GENERAL NOTES	
157	GENERAL NOTES	
158	GENERAL NOTES	
159	GENERAL NOTES	
160	GENERAL NOTES	
161	GENERAL NOTES	
162	GENERAL NOTES	
163	GENERAL NOTES	
164	GENERAL NOTES	
165	GENERAL NOTES	
166	GENERAL NOTES	
167	GENERAL NOTES	
168	GENERAL NOTES	
169	GENERAL NOTES	
170	GENERAL NOTES	
171	GENERAL NOTES	
172	GENERAL NOTES	
173	GENERAL NOTES	
174	GENERAL NOTES	
175	GENERAL NOTES	
176	GENERAL NOTES	
177	GENERAL NOTES	
178	GENERAL NOTES	
179	GENERAL NOTES	
180	GENERAL NOTES	
181	GENERAL NOTES	
182	GENERAL NOTES	
183	GENERAL NOTES	
184	GENERAL NOTES	
185	GENERAL NOTES	
186	GENERAL NOTES	
187	GENERAL NOTES	
188	GENERAL NOTES	
189	GENERAL NOTES	
190	GENERAL NOTES	
191	GENERAL NOTES	
192	GENERAL NOTES	
193	GENERAL NOTES	
194	GENERAL NOTES	
195	GENERAL NOTES	
196	GENERAL NOTES	
197	GENERAL NOTES	
198	GENERAL NOTES	
199	GENERAL NOTES	
200	GENERAL NOTES	

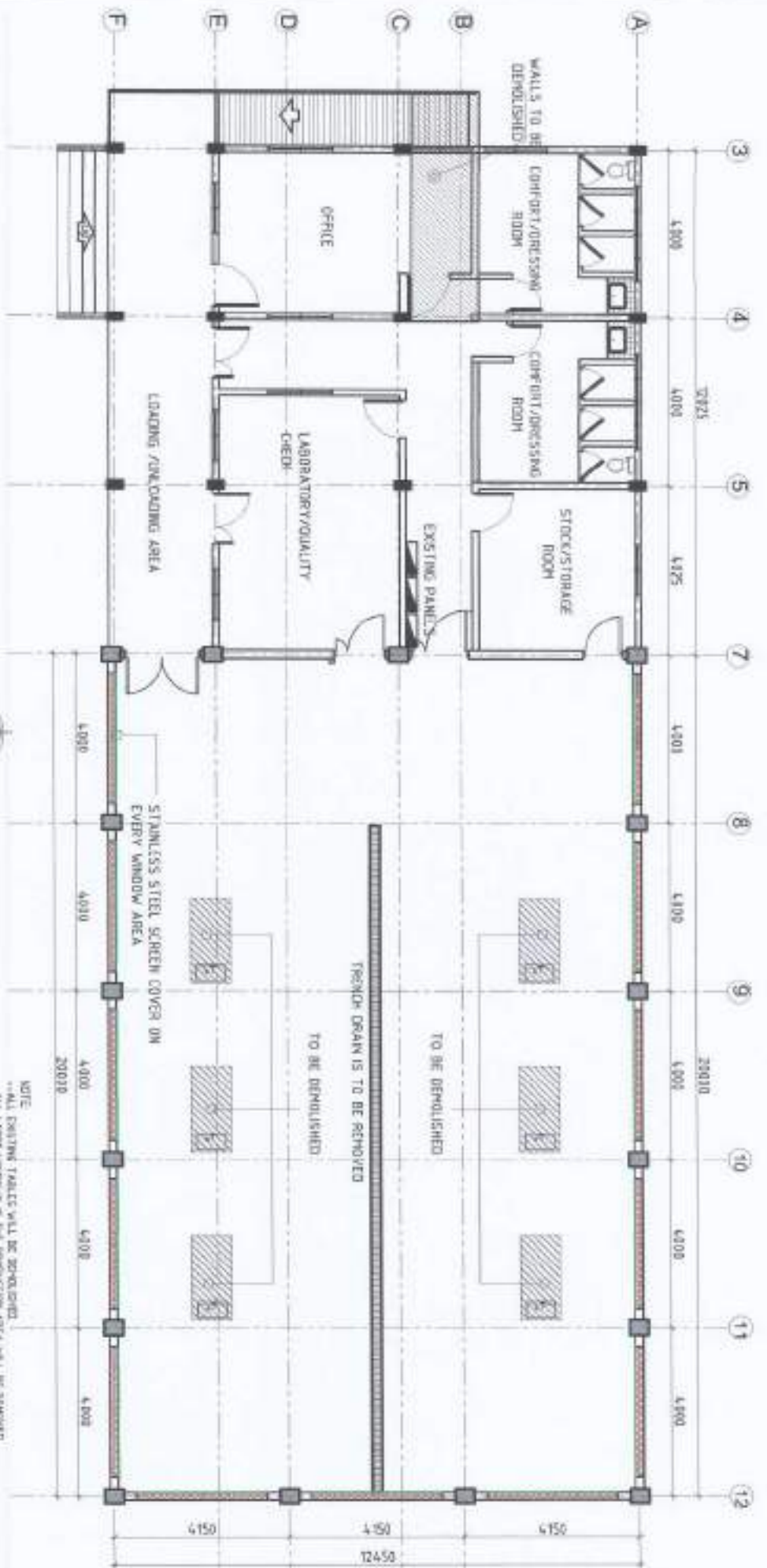
PERSPECTIVE
SCALE 1/16"



SITE DEVELOPMENT PLAN
SCALE 1/8"

LOCATION PLAN
SCALE 1/16"

PROJECT TITLE & LOCATION: **UPGRADING OF THE FOOD PROCESSING FACILITY**
 APPROVED BY: *[Signature]* **JUSTINE COJUE & LABAO**
 CHECKED & SUBMITTED BY: *[Signature]* **ANDRES M. BALUNGAN JR.**
 CONSULTED BY: *[Signature]* **ARVIN V. VALLETEROS**
 RECOGNITION APPROVAL: *[Signature]* **CAROLYN V. VADIL**
 APPROVED BY: *[Signature]* **WENDEL A. DURABLE JR.**
 SHEET NO. **A-11**

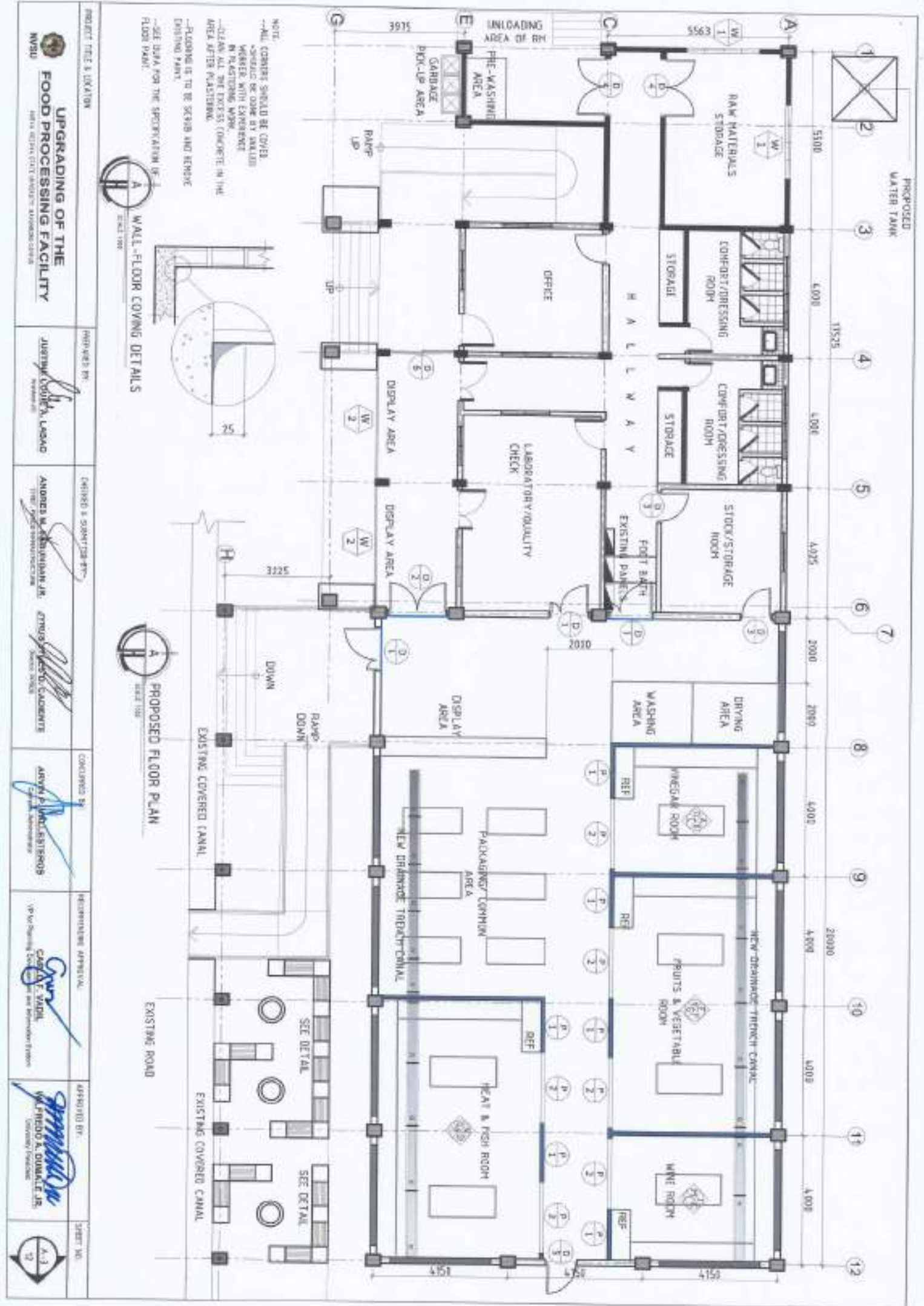


EXISTING FLOOR PLAN

LEGEND:
 [Red hatched pattern] TO BE COVERED WITH STAINLESS STEEL RENOVABLE SCREEN
 [Green hatched pattern] MAKE THE BUILDING PER DETAILS
 [Blue hatched pattern] TO BE DEMOLISHED

NOTE:
 **ALL EXISTING TABLES WILL BE DEMOLISHED.
 **ALL LABEL WINDOWS IN THE PRODUCTION AREA WILL BE REMOVED.
 **ALL WINDOWS SHALL BE CLEANED AND SCREENED WITH INDOOR FRESH AIR TO PREVENT THE
 ENTRENCHING OF GREASEY OILS OR PESTS.
 **ALL DOORS SHOULD BE REPLACED WITH SELF-CLOSING DOORS.
 **THE EXISTING CANAL DRENCH SHALL BE REMOVED AND CLEANED BEFORE INSTALLING THE NEW
 TRENCH DRAIN AND GRATING SYSTEM.
 **FLOOR SHOULD BE CLEANED THOROUGHLY BEFORE APPLYING THE PAINT.

PROJECT TITLE & LOCATION UPGRADING OF THE FOOD PROCESSING FACILITY <small>INDONESIA STATE UNIVERSITY (IVSU) - BELA NGAJI DEVELOPMENT, WINDAH SUBURB</small>	PREPARED BY: <small>ANTONIUS LUKMAN A. LAKSONO</small>	CHECKED & SUBMITTED BY: <small>ANINDITA M. SAIBUNGGAN, JR.</small> <small>YRMAUS M. SAIBUNGGAN, SR.</small>	CONSULTED BY: <small>ARVIN P. JALIL HATTAROSS</small>	REGISTERING ARCHITECT: <small>CAHYO F. KADIR</small> <small>Architect and Interior Design</small>	APPROVED BY: <small>WAHID H. DJALIL</small> <small>University Director</small>	SHEET NO. <small>A-2</small> <small>11</small>
---	--	--	---	--	---	---



PROJECT TITLE & LOCATION

PROPOSED BY: **JERRY W. COOPER, L.A.S.C.**

ENGINEER & SURVEYOR: **ANDREW M. STEINBACH, JR., THE ENGINEERS**

CONSULTED BY: **ARVIN P. WALLIS, S.P.O.S.**

REGISTERED ARCHITECT: **CAROL F. VARDI, CAPA, F. VARDI, INC.**

APPROVED BY: **W. FREDO A. DOMATE, JR., Consulting Professional**

SHEET NO. **A-1**

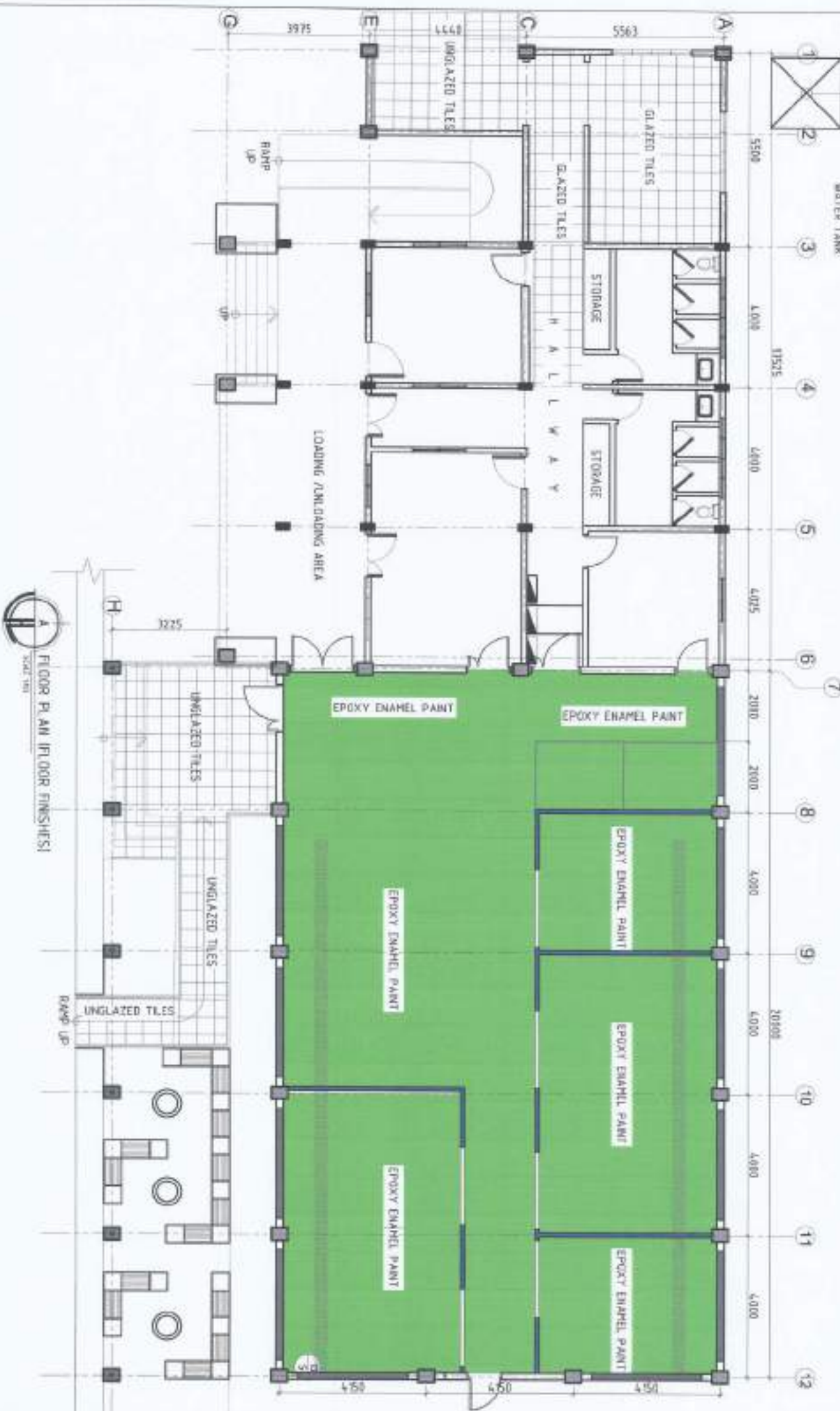
DATE: **12**

UPGRADING OF THE FOOD PROCESSING FACILITY

NOTE: --ALL CORNERS SHOULD BE COVERED. --SEALING TO BE DONE BY SKILLED WORKER WITH EXPERIENCE IN PLASTERING WORK. --CLEAN ALL THE EXCESS CONCRETE IN THE AREA AFTER PLASTERING. --FLOORING IS TO BE SCABBED AND REFINISH EXISTING PAINT. --SEE DATA FOR THE SPECIFICATION OF FLOOR PAINT.

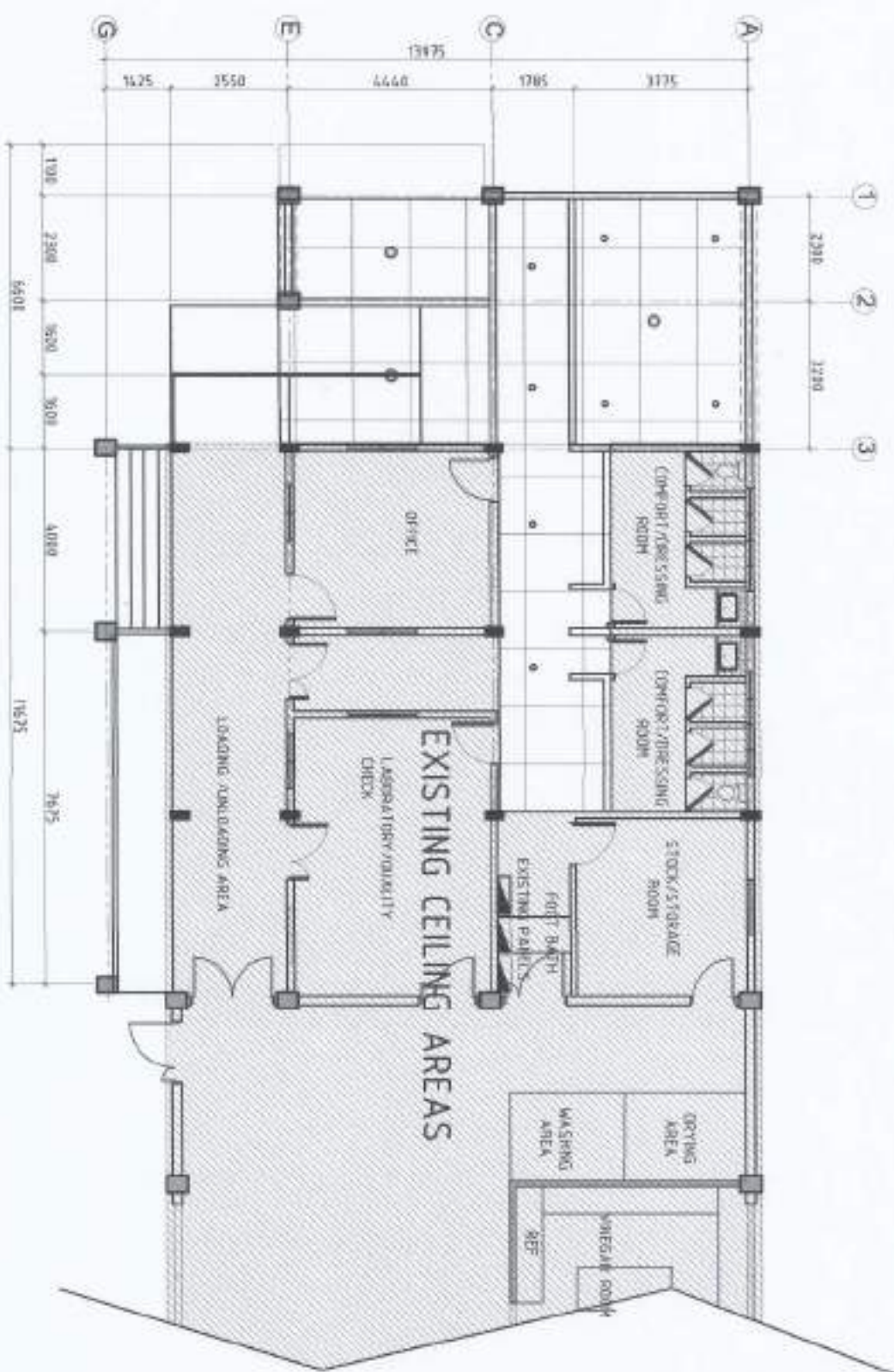
WALL-FLOOR COVERING DETAILS

PROPOSED WATER TANK



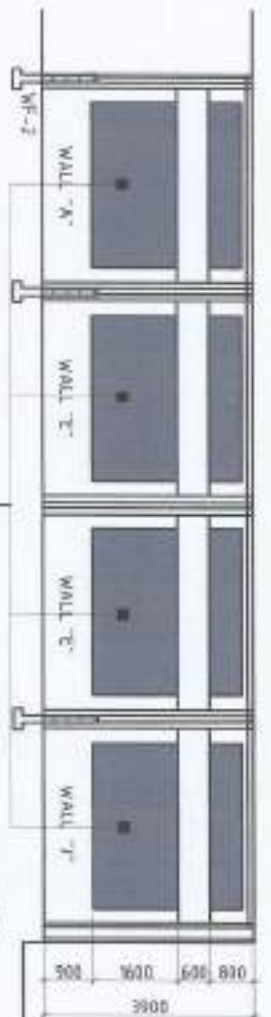
FLOOR PLAN (FLOOR FINISHES)
 SCALE: 1/8" = 1'-0"

<p>PROJECT TITLE & LOCATION</p> <p>UPGRADING OF THE FOOD PROCESSING FACILITY <small>1000 WEST STREET, PORT OF SPAIN, TRINIDAD AND TOBAGO</small></p>	<p>DESIGNED BY</p> <p><i>JUSTIN LAMAR A. LAMAR</i> <small>ARCHITECT</small></p>	<p>ENGINEER & SIGNATURE SV.</p> <p><i>ANDREW B. ALBUQUAQUE JR.</i> <small>REGISTERED ENGINEER</small></p>	<p>CONTRACTOR</p> <p><i>JAYNEE SINGH, COORDINATOR</i> <small>CONTRACTOR</small></p>	<p>ENGINEER BY</p> <p><i>ARUN K. V. SURESH</i> <small>REGISTERED ENGINEER</small></p>	<p>REGULATORY APPROVAL</p> <p><i>SAUL P. UJAL</i> <small>OFFICER IN CHARGE</small></p>	<p>APPROVED BY</p> <p><i>WILLIAM A. DANIELS JR.</i> <small>REGISTERED ARCHITECT</small></p>	<p>SHEET NO.</p> <p>A-1 <small>OF 12</small></p>
--	--	--	--	--	---	--	---

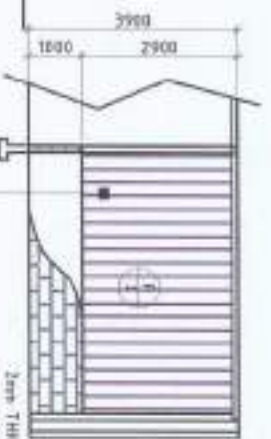


REFLECTED CEILING PLAN
 1/8" = 1'-0"

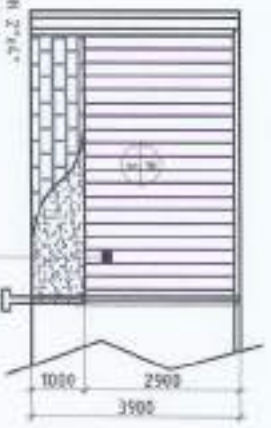
PROJECT TITLE & LOCATION UPGRADING OF THE FOOD PROCESSING FACILITY NEW RIVER CIVIL AVENUE, BIRMINGHAM, ALABAMA NRSU	PREPARED BY JUSTIN LOU A. LYMAN	CHECKED & SUBMITTED BY ANDREW S. JALANHOAN JR. CHIEF ARCHITECT	JENNIFER L. ST. GAUDENS ARCHITECT	ENGINEER BY ARYONN L. WALKER ENGINEER	INTERVIEWED APPROVAL: CHANG S. YOOH CHIEF OF FACILITY AND INFORMATION SYSTEMS	APPROVED BY WES BIRD A. DUNN & J.R.	SHEET NO. A-5 12
---	------------------------------------	--	--------------------------------------	---	---	--	------------------------



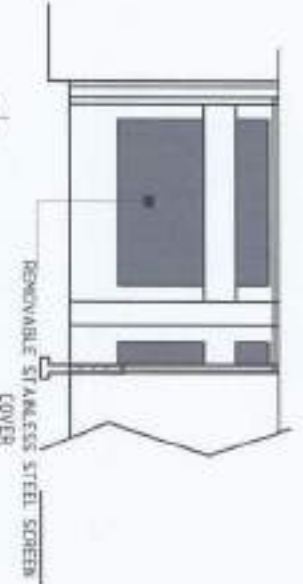
REMOVABLE STAINLESS STEEL SCREEN COVER
WALL SECTION "A.E.J."



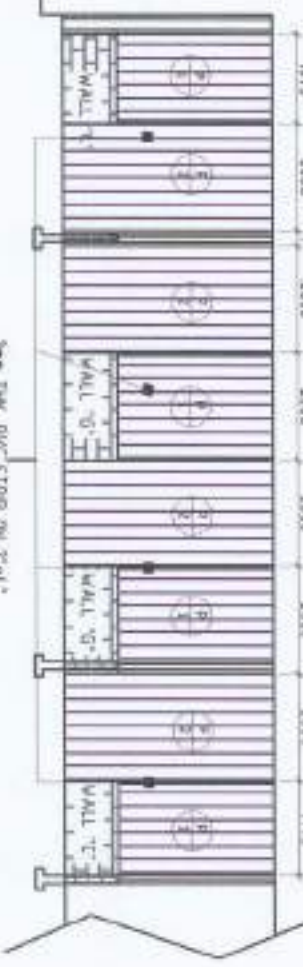
WALL SECTION "D.H.M."



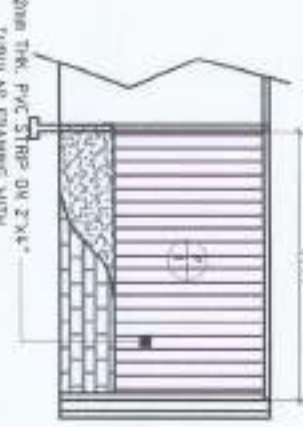
WALL SECTION "B.F."



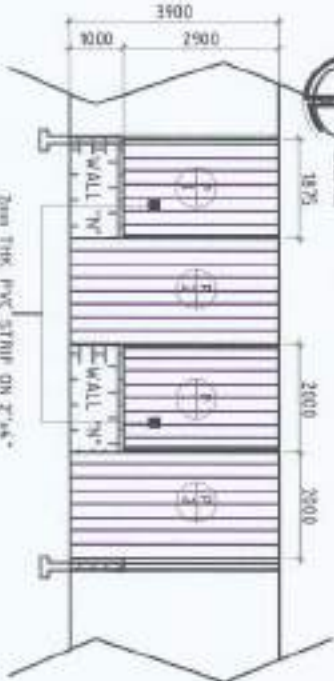
WALL SECTION "K."



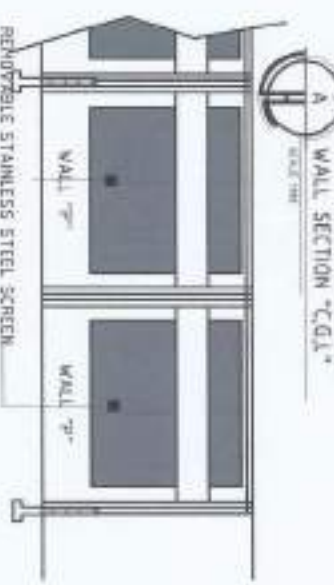
WALL SECTION "C.G.L."



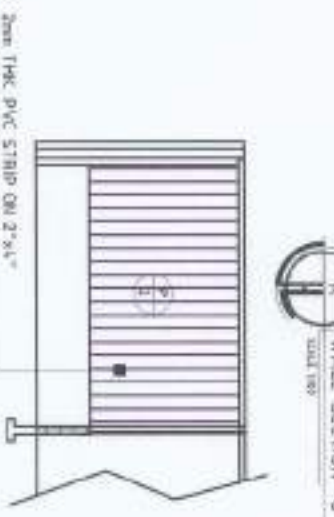
WALL SECTION "O."



WALL SECTION "N."



WALL SECTION "P."



WALL SECTION "Q."



2000 THK. PVC STRIP ON 2"x4" TUBULAR FRAMING WITH COMPLETE ACCESSORIES

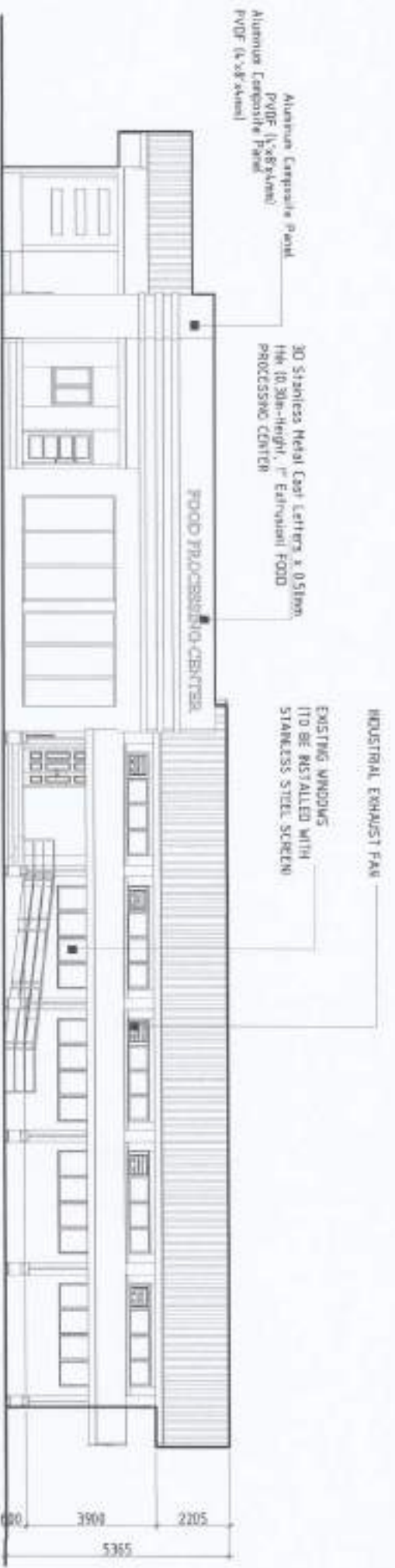
2000 THK. PVC STRIP ON 2"x4" TUBULAR FRAMING WITH COMPLETE ACCESSORIES

2000 THK. PVC STRIP ON 2"x4" TUBULAR FRAMING WITH COMPLETE ACCESSORIES

2000 THK. PVC STRIP ON 2"x4" TUBULAR FRAMING WITH COMPLETE ACCESSORIES

2000 THK. PVC STRIP ON 2"x4" TUBULAR FRAMING WITH COMPLETE ACCESSORIES

PROJECT TITLE & LOCATION	DESIGNED BY	DESIGNED & DRAWING BY	CONSTRUCTED BY	REVIEWING ARCHITECT	APPROVED BY	DATE
UPGRADING OF THE FOOD PROCESSING FACILITY NEW DEPARTMENT ARCHITECTURE DIVISION WASU	JUSTINO LOPEZ & LIMBAO	ANDRES A. BENDICAN JR. CHIEF ARCHITECT	JHUISA SERRANO GARCIA	ARVIN B. VILLAROSA ARCHITECT	WILFRED A. DUMALE JR. LICENSED PROFESSIONAL ARCHITECT	A-6 12



FRONT ELEVATION



ENTRANCE DESIGN



RIGHT-SIDE ELEVATION

<p>PROJECT TITLE & LOCATION</p> <p>UPGRADING OF THE FOOD PROCESSING FACILITY</p> <p>NEW DEVELOPMENT PROJECT - BANGKOK, THAILAND</p>	<p>PREPARED BY</p> <p><i>Justin Cooper A. Llanos</i></p>	<p>CHIEF ARCHITECT</p> <p><i>Justin Cooper A. Llanos</i></p>	<p>CONCEPT BY</p> <p><i>Arvin R. Valdes</i></p>	<p>REVISIONS APPROVAL:</p> <p><i>Carlo F. Vakil</i></p>	<p>APPROVED BY:</p> <p><i>Wenceslao A. Dimala Jr.</i></p>	<p>SHEET NO.</p> <p>4-7</p>
--	--	--	---	---	---	-----------------------------

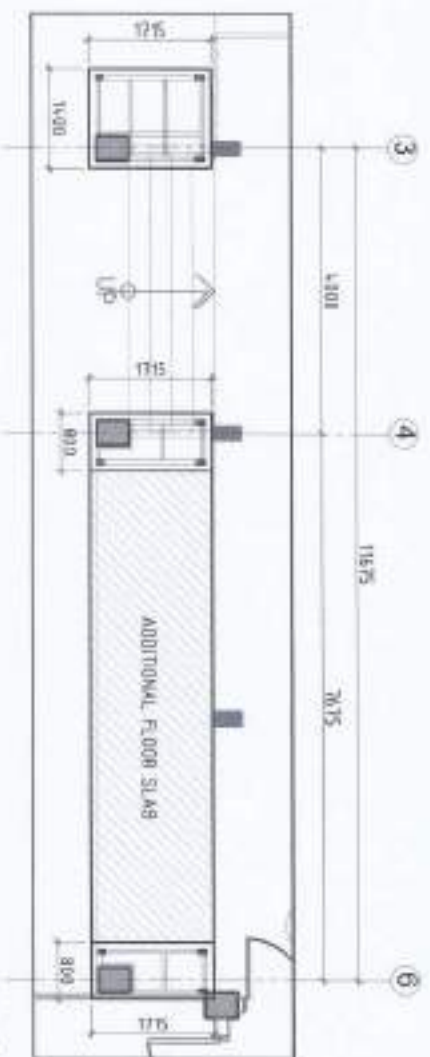


REAR ELEVATION

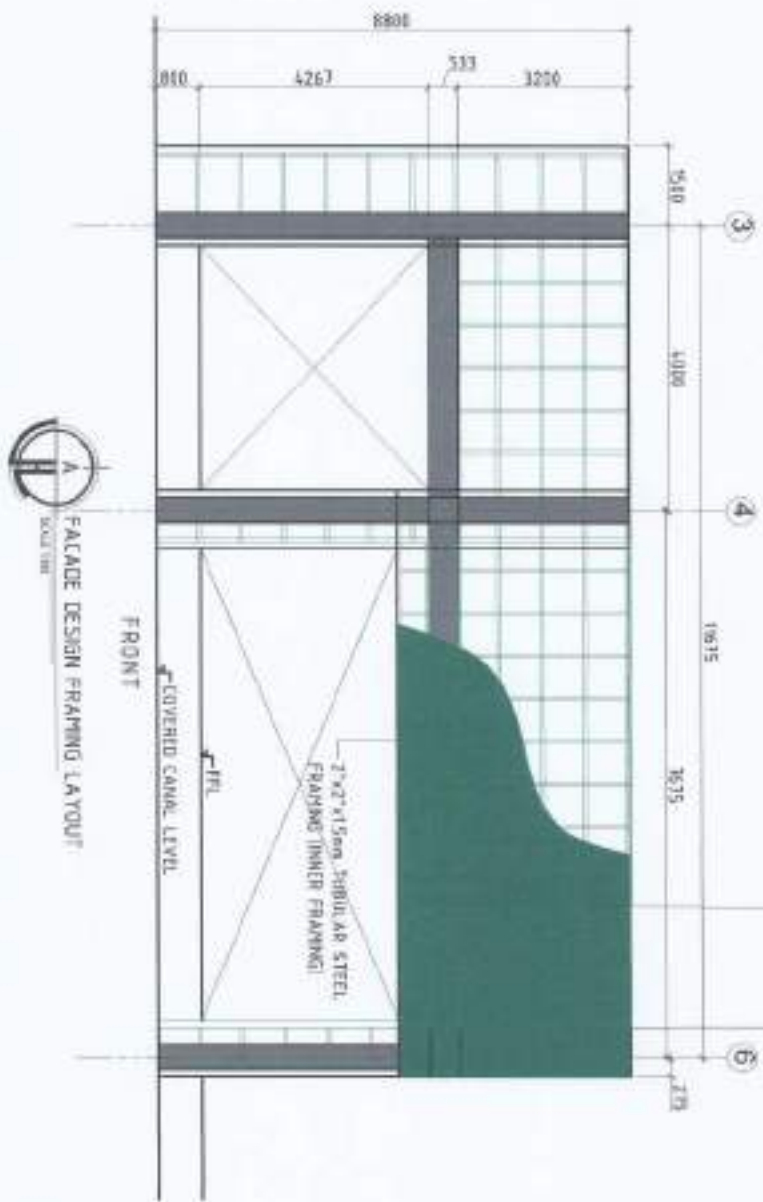


LEFT-SIDE ELEVATION

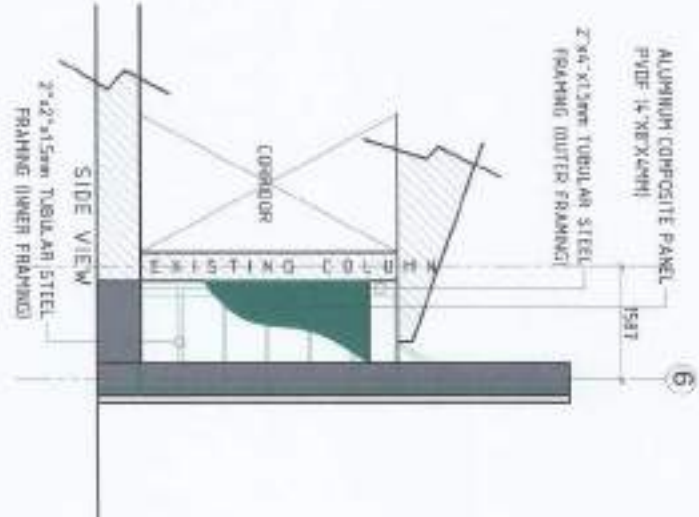
<p>PROJECT TITLE & LOCATION</p> <p>UPGRADING OF THE FOOD PROCESSING FACILITY</p> <p>MSBU</p>	<p>PROJECT BY</p> <p><i>JUSTINO QUE A. LAMAO</i></p>	<p>(CLIENT & SUBMITTER BY)</p> <p><i>ANDRES M. SALDIVAN JR.</i></p>	<p>CLIENT REPRESENTATIVE</p> <p><i>JYBUENABEN C. CASIENTE</i></p>	<p>CONSULTED BY</p> <p><i>ARVIN P. ALBERTOS</i></p>	<p>RECOMMENDED APPROVAL:</p> <p><i>CARLOS W. MOLE</i></p>	<p>APPROVED BY</p> <p><i>WILFREDO S. DURAN JR.</i></p>	<p>SHEET NO.</p> <p>A-3 12</p>
---	--	---	---	---	---	--	------------------------------------



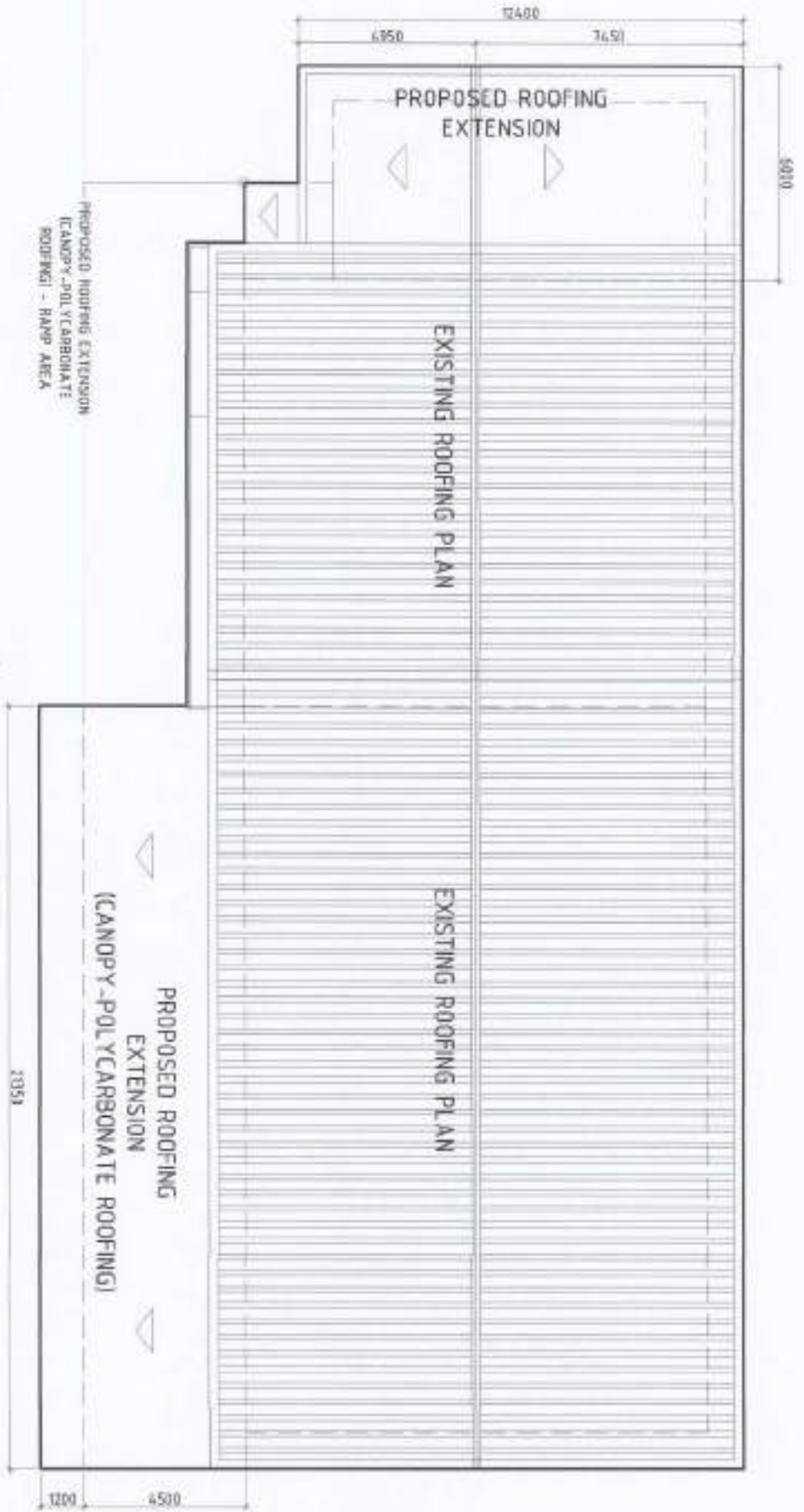
NOTE
 **COORDINATE WITH PAVCO PERSONNEL PROJECT-IN-CHARGE BEFORE INSTALLATION OF FRAMING AND ACP PANELS.
 **INSTALLATION SHOULD BE DONE BY SKILLED WORKER/ACP INSTALLER.
 **ALL CORNERS & GAPS SHOULD BE SEALED PROPERLY.
 **SEE DUDA F100 DETAILED SPECIFICATIONS.



FACADE DESIGN FRAMING LAYOUT



PROJECT TITLE & LOCATION UPGRADING OF THE FOOD PROCESSING FACILITY <small>NEW FOOD EXTENSION PROJECT PHASE 1</small>	DESIGNED BY  ASSISTANT PROJECT MANAGER	CHECKED & SUBMITTED BY ANAND M. SATHYANARAYANAN JR. JUNYUANG O. CADENTE	DRAWING BY ARVIN M. MASTERS	RECEIVING APPROVAL  PROJECT MANAGER	APPROVED BY  PROJECT MANAGER	SHEET NO. 
---	--	---	--------------------------------	---	--	---



PROPOSED ROOFING EXTENSION
(CANOPY-POLYCARBONATE
ROOFING) - RAMP AREA

PROPOSED ROOFING
EXTENSION
(CANOPY-POLYCARBONATE ROOFING)

EXISTING ROOFING PLAN

EXISTING ROOFING PLAN

PROJECT TITLE & LOCATION UPGRADING OF THE FOOD PROCESSING FACILITY <small>MWSJ 001-123456 (001) PART 1'S PRELIMINARY PLAN</small>	PREPARED BY JUSTINE ANNE A. LARAO <small>ARCHITECT</small>	CHECKED & SUBMITTED BY ANDRES M. SABUNCAN JR. <small>SENIOR ARCHITECT</small>	CHECKED BY ARVIN P. CASTROS <small>ARCHITECT</small>	RECOMMENDED APPROVAL: O.F. VADIL <small>PROJECT MANAGER</small>	APPROVED BY WILSON A. CARBONE JR. <small>REGISTERED ARCHITECT</small>	SHEET NO. A-10 12
--	---	--	---	--	--	---

SCHEDULE OF DOORS

<p>DOOR 1 ①</p>	<p>DOOR 2 ②</p>	<p>DOOR 3 ③</p>	<p>DOOR 4 ④</p>	<p>DOOR 5 ⑤</p>	<p>DOOR 6 ⑥</p>
<p>DOOR 1 ①</p>	<p>DOOR 2 ②</p>	<p>DOOR 3 ③</p>	<p>DOOR 4 ④</p>	<p>DOOR 5 ⑤</p>	<p>DOOR 6 ⑥</p>
<p>DOOR 1 ①</p>	<p>DOOR 2 ②</p>	<p>DOOR 3 ③</p>	<p>DOOR 4 ④</p>	<p>DOOR 5 ⑤</p>	<p>DOOR 6 ⑥</p>
<p>DOOR 1 ①</p>	<p>DOOR 2 ②</p>	<p>DOOR 3 ③</p>	<p>DOOR 4 ④</p>	<p>DOOR 5 ⑤</p>	<p>DOOR 6 ⑥</p>
<p>DOOR 1 ①</p>	<p>DOOR 2 ②</p>	<p>DOOR 3 ③</p>	<p>DOOR 4 ④</p>	<p>DOOR 5 ⑤</p>	<p>DOOR 6 ⑥</p>
<p>DOOR 1 ①</p>	<p>DOOR 2 ②</p>	<p>DOOR 3 ③</p>	<p>DOOR 4 ④</p>	<p>DOOR 5 ⑤</p>	<p>DOOR 6 ⑥</p>

SCHEDULE OF WINDOWS

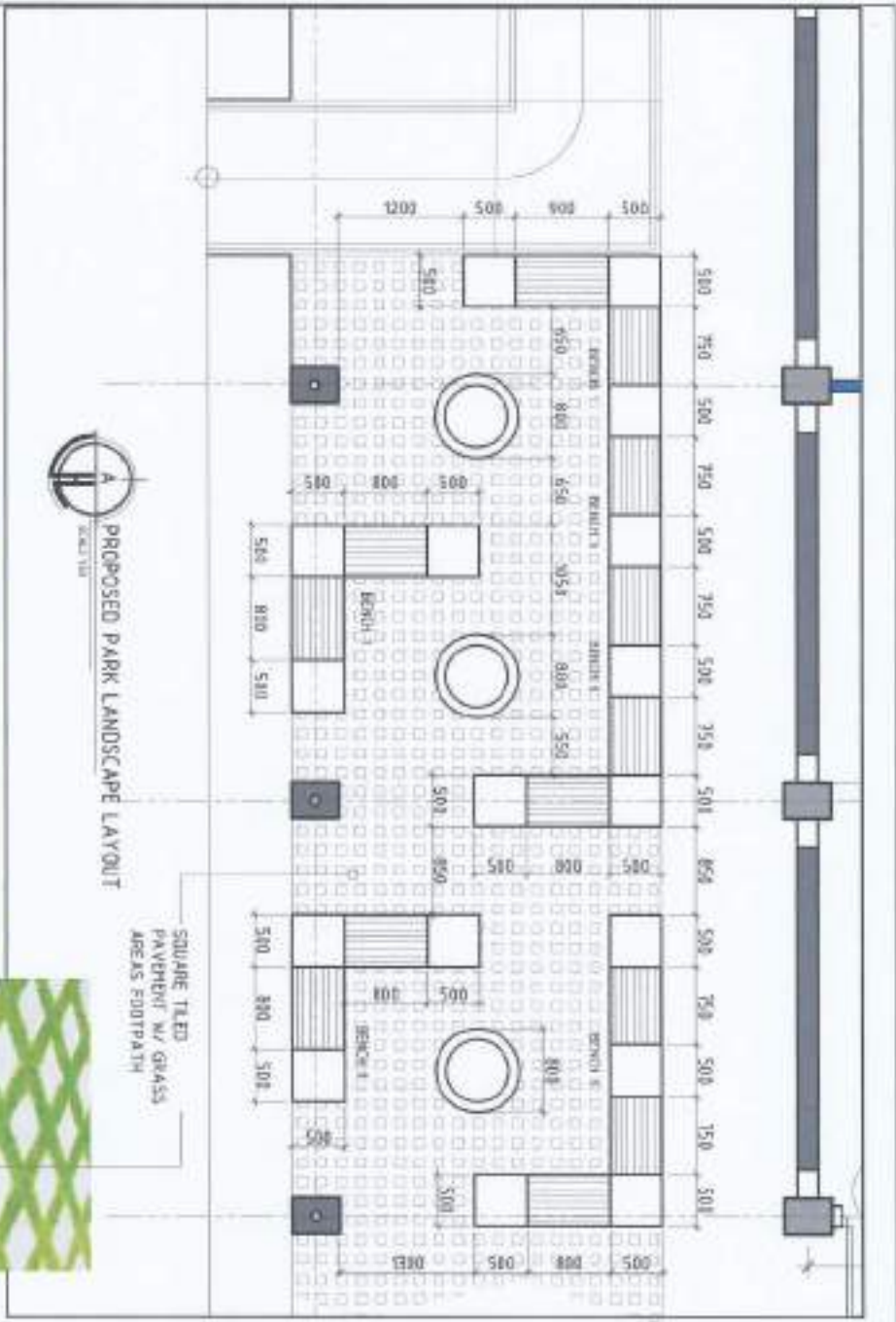
<p>WINDOW 1 ①</p>	<p>WINDOW 1 ①</p>
-----------------------	-----------------------

ARCHITECTURAL GENERAL NOTES

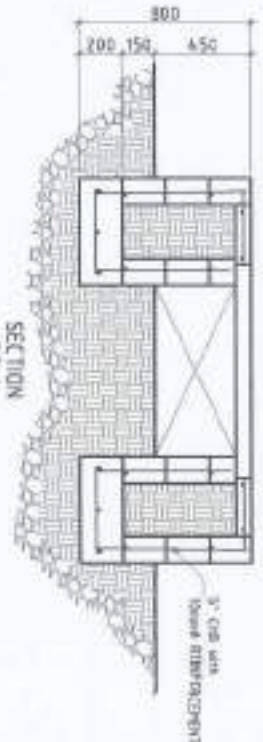
1. IN THE REPRESENTATION OF THESE DRAWINGS, HIDDEN LINES SHALL GOVERN AND DISTANCES OR DIMS SHALL NOT BE SCALED FOR CONSTRUCTION PURPOSES.
2. UNLESS OTHERWISE SPECIFIED ALL DIMENSIONS ARE IN MILLIMETERS.
3. ALL DRAWINGS SHALL NOTE OR SCALE ONLY VERTICAL DIMENSIONS SHALL BE FOLLOWED.
4. ALL DIMENSIONS SHALL BE READ IN CONJUNCTION FOR PROPER CORRELATION.
5. ANY INCONSISTENCY OR DISCREPANCY IS TO BE BROUGHT TO THE ATTENTION OF THE ARCHITECT/ENGINEER BEFORE COMMENCEMENT OF WORK.
6. THE CONTRACTOR SHALL COORDINATE WITH THE ME, PE, SE, EE AND OTHER UTILITIES AND EQUIPMENT PLANS FOR THE EXACT SIZE, NUMBER AND LOCATION OF ALL STEELS OR OPENINGS THROUGH SLABS, BEAMS AND WALLS AND ALSO BUILDING STRUCTURE.
7. ALL REINFORCED CONCRETE SHALL BE IN ACCORDANCE WITH THE ACI-318-08 BUILDING CODE, AND ALL STRUCTURAL STEEL WORK SHALL BE DONE IN ACCORDANCE WITH AISC SPECIFICATIONS LATEST EDITION IN SO FAR AS THEY DO NOT CONFLICT WITH THE LOCAL BUILDING CODE REQUIREMENTS.
8. ALL SLAB, BEAMS, WALLS AND OTHER STRUCTURAL MEMBERS WHICH ARE NOT REINFORCED/DETAILS TO BE OBTAINED OR MANUFACTURED/EMBEDDED BUT ARE NECESSARY TO BE COORDINATED WITH THE ARCHITECTURAL AND OTHER ALLIED ENGINEERING PLANS AS WELL AS TO COMPLETE THE STRUCTURAL WORKS IN ACCORDANCE WITH THE INTENT OF THE PLANS AND SPECIFICATIONS SHALL BE BROUGHT UP BEFORE THE MEASUREMENTS / NEGOTIATIONS IF IT IS UNDERSTOOD THAT THE CONTRACTOR HAS REVIEWED AND INCLUDED ALL THESE ITEMS IN THEIR BIDS.

PROJECT TITLE & LOCATION: **UPGRADING OF THE FOOD PROCESSING FACILITY**

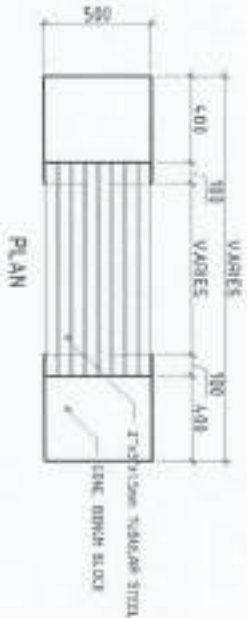
PREPARED BY: **JUSTINE COBE A. LABAO**
 CHECKED & SUBMITTED BY: **ANDREA M. ALJUNGAN JR.**
 APPROVED BY: **ARVIN P. ALBERTOS**
 SHEET NO.: **A-11**



SQUARE TILED PAVEMENT w/ GRASS AREAS FOOTPATH



BENCH 1 DETAILS



PLAN



ELEVATION



PROPOSED PARK LANDSCAPE LAYOUT

PROJECT TITLE & LOCATION

UPGRADING OF THE FOOD PROCESSING FACILITY
 WITH DESIGN (P&ID) PROJECT - BANGALOR, INDIA
 NWSJ

PREPARED BY

JUSTIN LOPEZ A. LABRADO
 PROJECT LEADER

CHECKED & SUBMITTED BY

ANDRES M. ALBUQUAQUE JR.
 PROJECT LEADER

CONFERRED BY

JYOTSNA K. GADGIL
 PROJECT LEADER

CONFERRED BY

ARVIN F. ALBERTOS
 PROJECT LEADER

RECOMMENDED APPROVAL

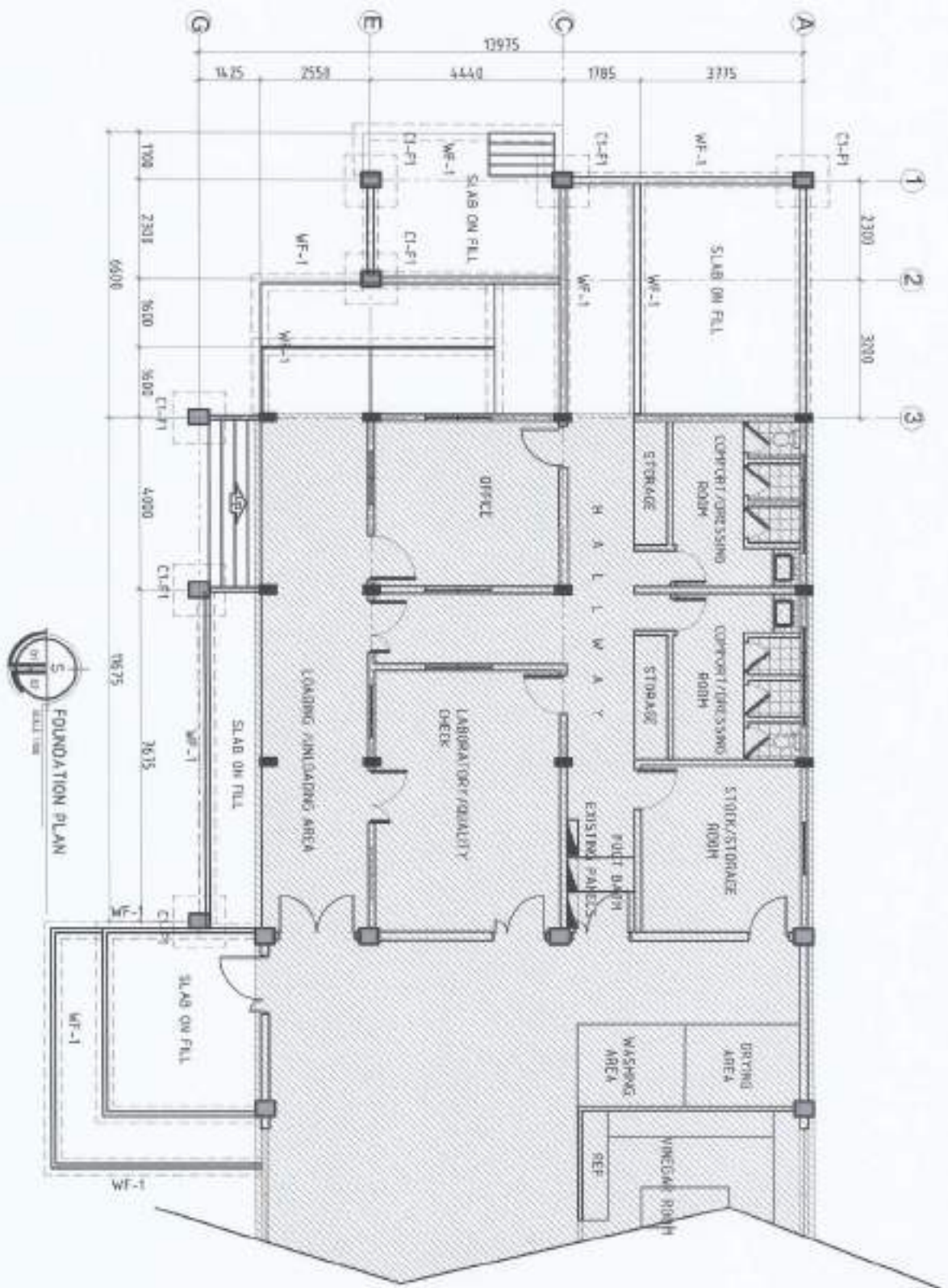
CARLOS F. VADIL
 PROJECT LEADER

APPROVED BY

MICHAEL A. DUMAS JR.
 PROJECT LEADER

SHEET NO.





FOUNDATION PLAN

PROJECT TITLE & LOCATION

UPGRADING OF THE FOOD PROCESSING FACILITY
 (with details from previous project drawings)

DESIGNED BY

JUSTINE LOUPE A. LABRADO

CHECKED & SUBMITTED BY

AMORIS M. SAMPAGAN JR.
JYRILYN M. CALABRANTE

ENGINEER BY

ANITA M. LESTEROS

REGISTERED ARCHITECT

JARRIL D. VADIL

APPROVED BY

WILFREDO A. DIMALAL, JR.

SHEET NO.

5-1



UPGRADING OF THE FOOD PROCESSING FACILITY
 (with details from previous project drawings)

JUSTINE LOUPE A. LABRADO

AMORIS M. SAMPAGAN JR.
JYRILYN M. CALABRANTE

ANITA M. LESTEROS

JARRIL D. VADIL

WILFREDO A. DIMALAL, JR.

5-1

PROJECT TITLE & LOCATION



**UPGRADING OF THE
FOOD PROCESSING FACILITY**
5014 SCIENTIFIC AVENUE, MARICOR CAMP

PREPARED BY

ZARTEME COBE A. LABRAO
ARCHITECT

CHECKED & SUBMITTED BY

ANDRES M. ARBUNGAN JR.
REGISTERED ARCHITECT

DESIGNED BY

JYNNY GLENN D. CALDERINE
REGISTERED ARCHITECT

COORDINATED BY

ARVIN R. VILLALBA
REGISTERED ARCHITECT

RECOMMENDING APPROVAL

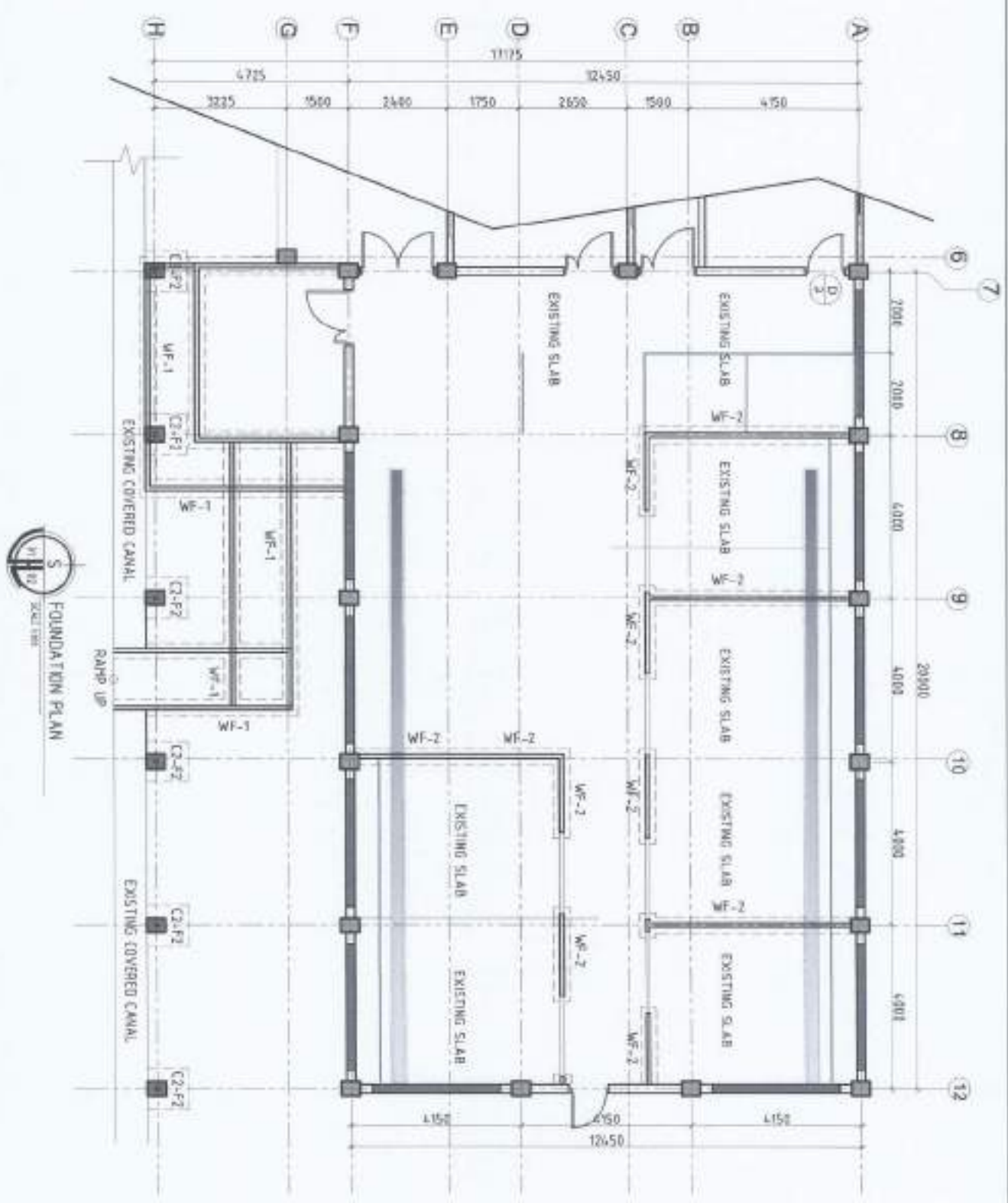
CARLO P. VAGLI
REGISTERED ARCHITECT

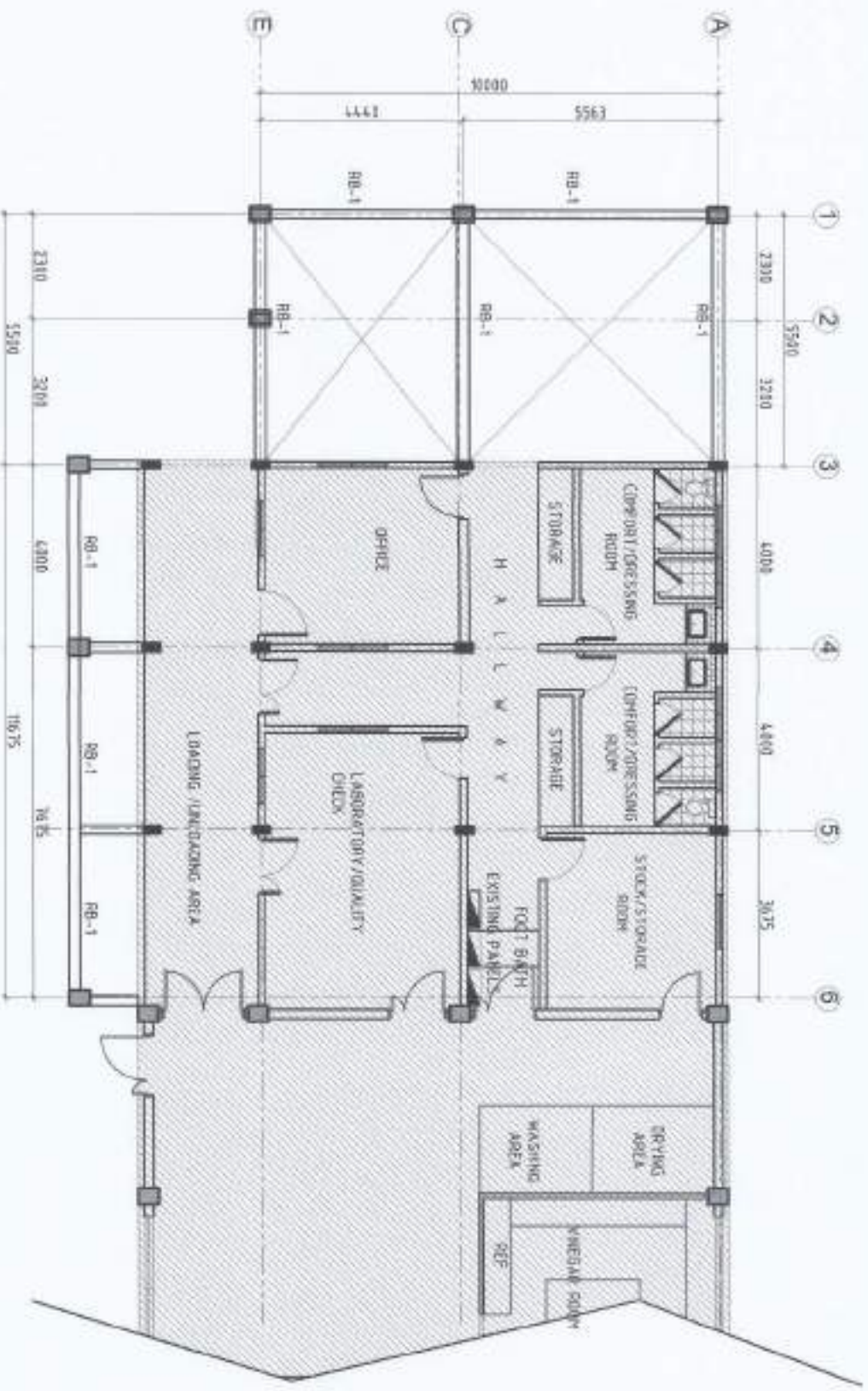
APPROVED BY

MARCELO A. DONALE JR.
REGISTERED ARCHITECT

SHEET NO.

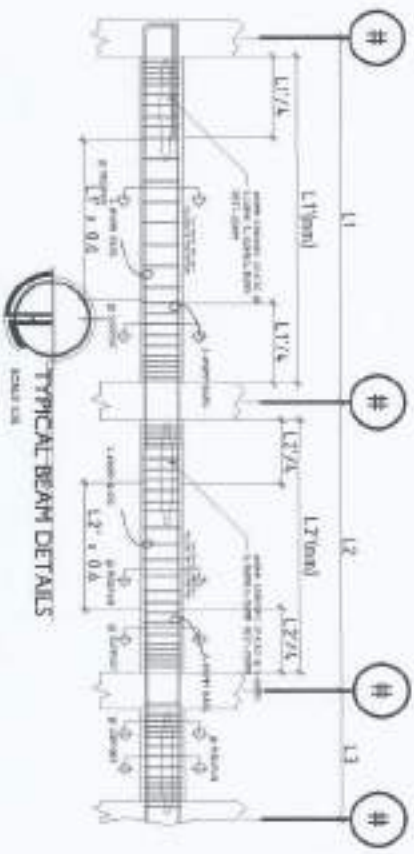
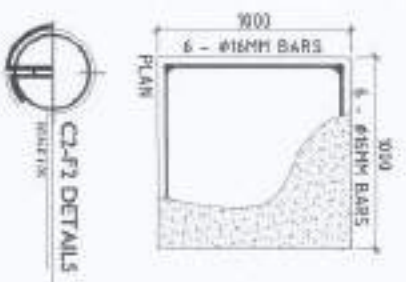
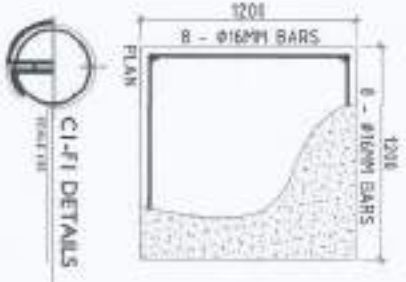
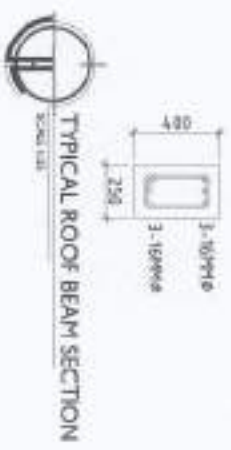
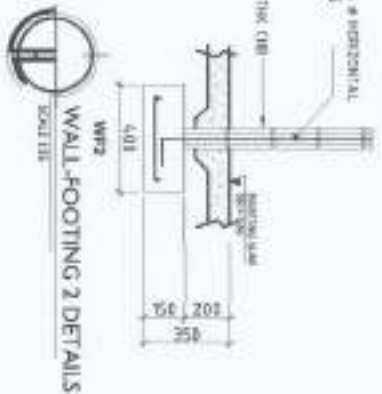
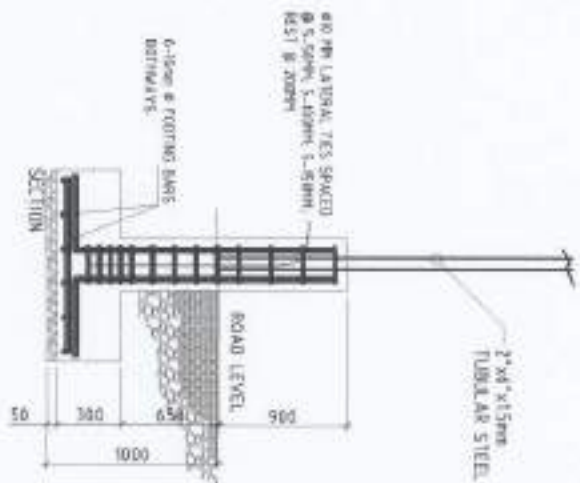
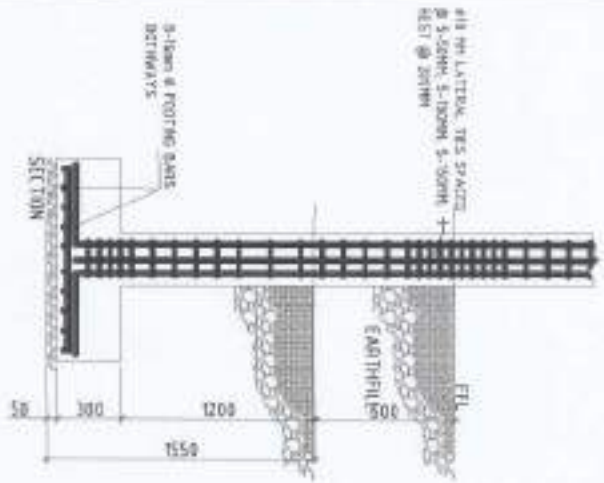
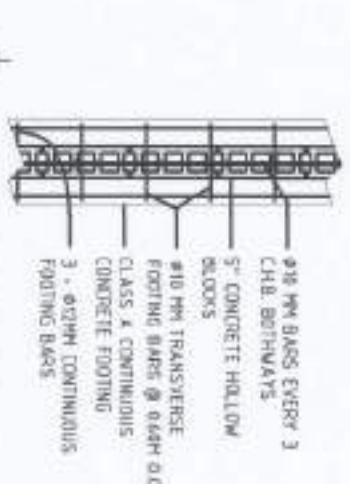
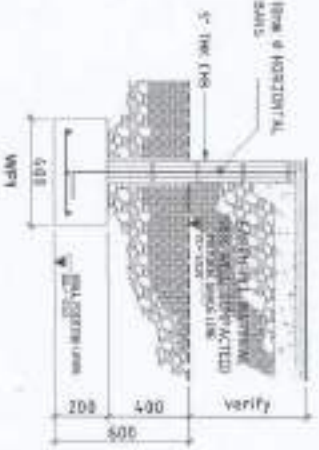
**5-2
1**





RIDGE BEAN LAYOUT

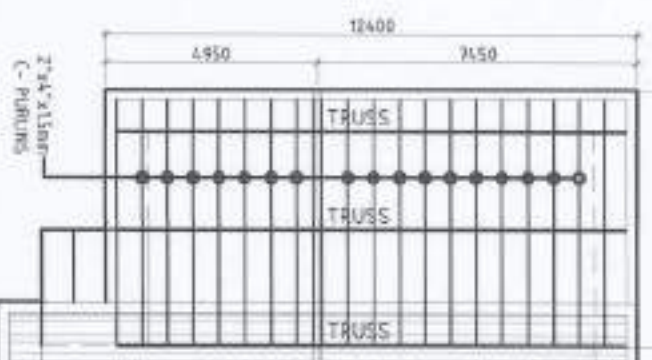
PROJECT TITLE & LOCATION UPGRADING OF THE FOOD PROCESSING FACILITY <small>ALTA RIZAL VILLAGE ROBERT ALBERGO CORP.</small>	PREPARED BY <small>JUSTIN WARE, LABAO</small>	CHECKED & SUBMITTED BY <small>ANDRES M. SANGUAN, JR.</small>	APPROVED BY <small>JYNESSA DEBES DE CALACHITE</small>	CONSULTED BY <small>ARNEL M. ESTEROSO</small>	DEPARTMENT APPROVAL: <small>CARLO F. VIDAL</small>	APPROVED BY <small>WILFREDO A. DURAN, III</small>	SHEET NO.
--	--	---	--	--	---	--	---------------



PROJECT TITLE & LOCATION	DESIGNED BY	CHECKED & SUBMITTED BY	DATE	APPROVED BY	SCALE
UPGRADING OF THE FOOD PROCESSING FACILITY	ANDREW M. GALJUNGAN JR.	ANDREW M. GALJUNGAN JR.	10/10/2023	WILfredo A. DOMALES JR.	1:1
CLIENT	PROJECT NO.	DATE	SCALE	PROJECT NO.	DATE
AGRI-TECH	1000	10/10/2023	1:1	1000	10/10/2023

UPGRADING OF THE FOOD PROCESSING FACILITY
 AGRI-TECH
 PROJECT NO. 1000
 DATE 10/10/2023
 SCALE 1:1

6000



EXISTING ROOFING PLAN

EXISTING ROOFING PLAN



MATERIALS

ROOFING GIRDS - A - 2x4x11/2"
TOP CHORD - L - 2x4x7/8"
WOB MEMBERS - L - 2x4x7/8"
USE 100KSPC21X12 LC PURLINS SPACED
900mm O.C. w/ 10mm x40 post @ 1800mm
RAFTER - 2x4x15mm TUBULAR STEEL
RAFTER PURLINS - 2x4x15mm TUBULAR STEEL

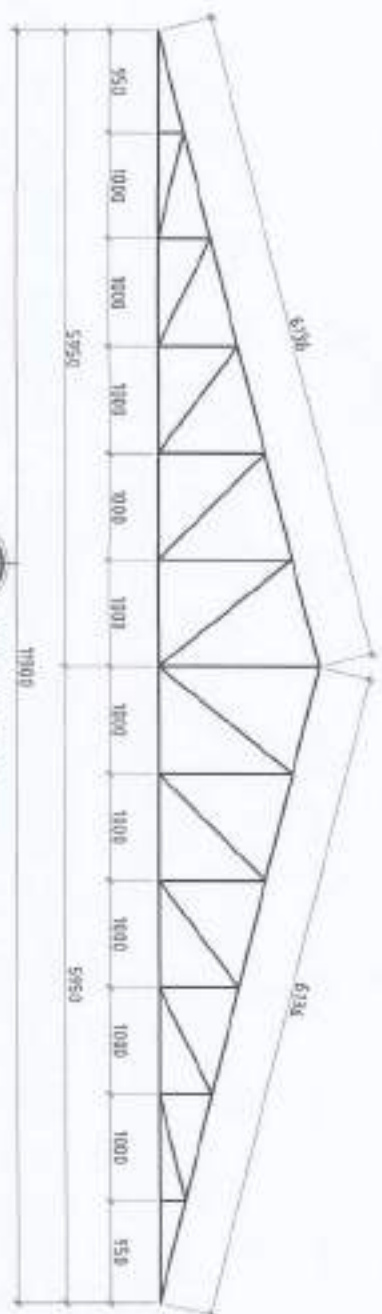
NOTE: ALL CONNECTIONS ARE TO BE FULLY WELD



PROJECT TITLE & LOCATION	PREPARED BY	DESIGNED & SUBMITTED BY	CHECKED BY	REVISIONS APPROVAL	APPROVED BY	SHEET NO.
--------------------------	-------------	-------------------------	------------	--------------------	-------------	-----------

UPGRADING OF THE FOOD PROCESSING FACILITY
 JUSTINE LOUIE A. LABAN
 ANDRES M. MALUNGAN JR.
 ERNEST S. CALIENTE
 ARRYN P. PALLESEROS
 VICTOR M. VARGAS
 WILSON M. DURAN JR.

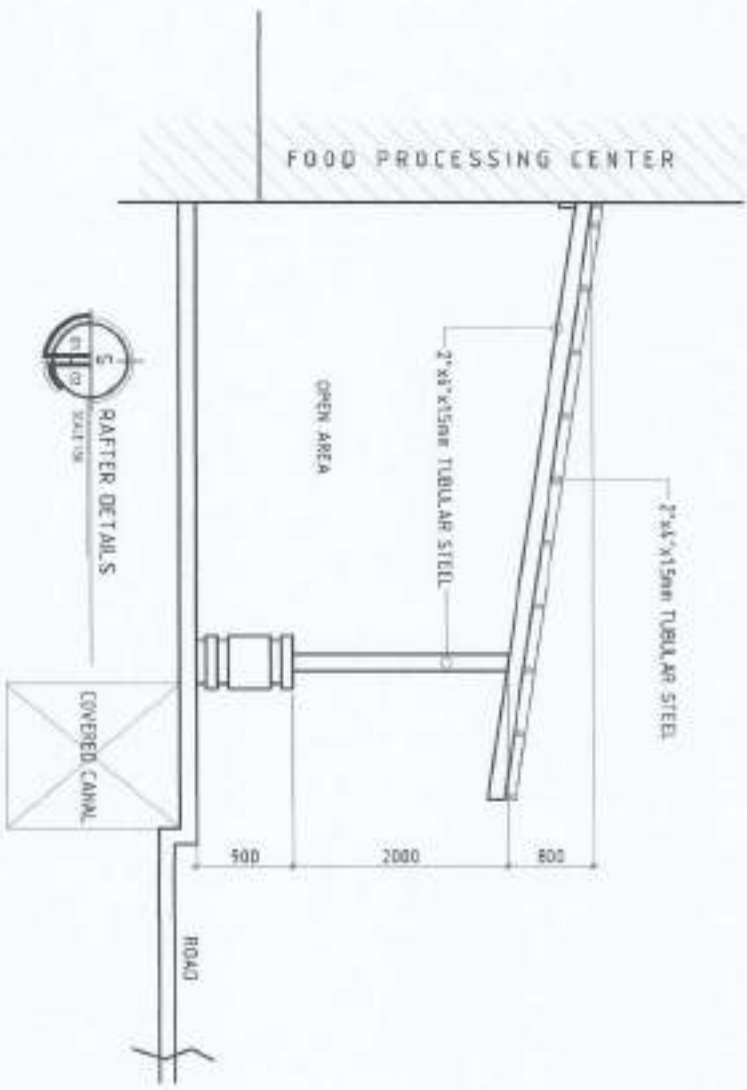




TRUSS DIAGRAM

MATERIALS
 BOTTOM CHORD - 1 - 2"x2"x1/4"
 TOP CHORD - 6 - 2"x2"x1/4"
 WEB MEMBERS - 12 - 2"x2"x1/4"
 USE 108050X10X2 LC - PURLINE SPACED
 600mm o.c. w/ 6mm S40 ROD @ HORIZAL
 RAFTER - 2"x6"x15mm TUBULAR STEEL
 RAFTER PURLING - 2"x6"x15mm TUBULAR STEEL

NOTE ALL CONNECTIONS ARE TO BE FULLY WELDED



PROJECT TITLE & LOCATION	PREPARED BY	CHECKED & APPROVED BY	DESIGNED BY	CONTRACTOR BY	RECOMMENDED APPROVAL	APPROVED BY	SHEET NO.
--------------------------	-------------	-----------------------	-------------	---------------	----------------------	-------------	-----------



UPGRADING OF THE FOOD PROCESSING FACILITY

9614 SOUTH VIKING AVENUE - BRIDGEVIEW, ILLINOIS 60417

ANDRE S. W. BOURGAINIA JR.

LYNUS JAMES D. CASCIARTE

APRIL F. W. BARTEROS

CARLO F. WAGLE

MIGUEL A. CUMANCE JR.



S-6

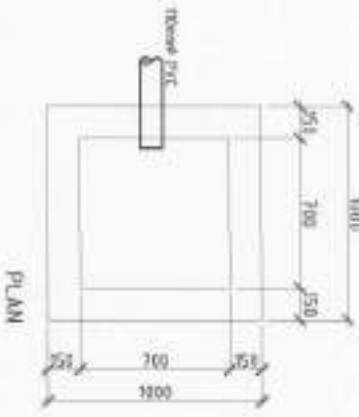
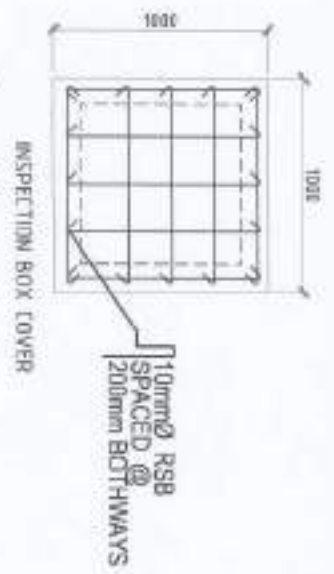
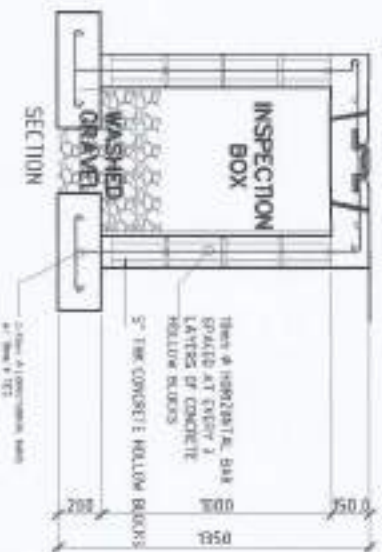
PLUMBING NOTES:

1. MIN. ALL HORIZONTAL PIPING IS PERFECT ALIGNMENT AND IF A FIRM GRADE NOT LESS THAN TWO PERCENT (2%)
2. ALL DRAINAGE IN DIRECTION SHALL BE MADE BY APPROPRIATE USE OF FORTY-FIVE DEGREE BENT INTO LONG ENTER CHANGES SIZED APPROPRIATE TO SLOPE AND BEING, WHICH THE CHANGE OF FLOW IS MADE. HORIZONTAL TO VERTICAL, A SLOPE HORIZONTAL CONNECTION WAVE USED ON VERTICAL, STUBS AND SHORT QUANTITIES BEING WAVE USED ON WAVE LINE. THE AND CHANGES WAVE USED IN BENT PIPES.
3. NO DOUBLE HUB OR TEE BRANCH SHALL BE USED ON HORIZONTAL, SOIL AND WASTE LINES. THE DRINKS AND CHANGES OF HORIZONTAL WAVE USED IN BENT PIPES AND USED OF SLOPE HUB AND DO NOT BE PROHIBITED.
4. CLEAN-OUTS ARE REQUIRED UNDER THE FOLLOWING CONDITIONS:
 - a. EVERY CHANGE OF HORIZONTAL DIRECTION EXCEEDING TWENTY TWO AND ONE-HALF DEGREES (22 1/2°)
 - b. ONE AND ONE-HALF METERS (15M) INSIDE THE PROPERTY LINES BEFORE THE BUILDING DRAINAGE CONNECTION.
 - c. EVERY SECTION EXCEEDING FIFTEEN (15) METERS HORIZONTAL RUN OR PIPES
 - d. AT THE END OF ANY HORIZONTAL PIPE LINES.
5. THE EXISTING CHAMBER OF SEPTIC TANK WAVE BE PLUMBING.
6. NOT LESS THAN 0.3 METERS OF AIR SPACE MUST OCCUR BETWEEN THE TOP OF THE SEWAGE AND THE UNDER PART OF WALL, ROOF SLAB.
7. UNDERSTAND WAVE SHALL BE SLOPED TO MINIMUM DEPTH OF 30mm BELOW THE TOP OF THE CHAMBER.
8. ALL PIPES PASSING THROUGH WALL, SLAB, BEAMS OR ANY PART OF THE BUILDING SHALL BE PROTECTED FROM RAINWATER AND ALL CONNECTIONS SHALL NOT BE SUBJECT TO CONDENSE STRAIGHT AND STRAIGHT.
9. SANITARY LINES SHALL BE 10mm SPEC. SANITARY SPEC FOR WATER SANITARY LINES TO DIRECTION CHAMBER.
10. NO SERVICE WAVE SHALL BE CONSTRUCTED UNDER THE DRAINAGE.
11. ALL PLUMBING WORK SHALL BE DONE UNDER THE SUPERVISION OF A LICENSED PLUMBING PLUMBER.

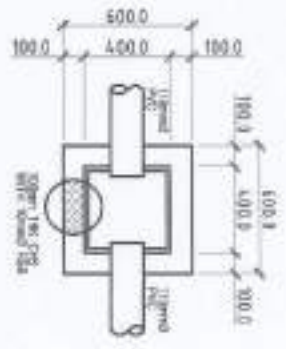
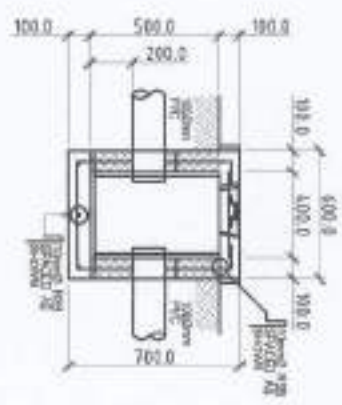
LEGEND:

01	SOIL TOWER	40mm Pvc Pipe
02	SOIL TOWER	40mm Pvc Pipe
03	WASTE	40mm Pvc Pipe
04	WASTE	40mm Pvc Pipe
05	WASTE	40mm Pvc Pipe
06	WASTE	40mm Pvc Pipe
07	WASTE	40mm Pvc Pipe
08	WASTE	40mm Pvc Pipe
09	WASTE	40mm Pvc Pipe
10	WASTE	40mm Pvc Pipe
11	WASTE	40mm Pvc Pipe
12	WASTE	40mm Pvc Pipe
13	WASTE	40mm Pvc Pipe
14	WASTE	40mm Pvc Pipe
15	WASTE	40mm Pvc Pipe
16	WASTE	40mm Pvc Pipe
17	WASTE	40mm Pvc Pipe
18	WASTE	40mm Pvc Pipe
19	WASTE	40mm Pvc Pipe
20	WASTE	40mm Pvc Pipe
21	WASTE	40mm Pvc Pipe
22	WASTE	40mm Pvc Pipe
23	WASTE	40mm Pvc Pipe
24	WASTE	40mm Pvc Pipe
25	WASTE	40mm Pvc Pipe
26	WASTE	40mm Pvc Pipe
27	WASTE	40mm Pvc Pipe
28	WASTE	40mm Pvc Pipe
29	WASTE	40mm Pvc Pipe
30	WASTE	40mm Pvc Pipe
31	WASTE	40mm Pvc Pipe
32	WASTE	40mm Pvc Pipe
33	WASTE	40mm Pvc Pipe
34	WASTE	40mm Pvc Pipe
35	WASTE	40mm Pvc Pipe
36	WASTE	40mm Pvc Pipe
37	WASTE	40mm Pvc Pipe
38	WASTE	40mm Pvc Pipe
39	WASTE	40mm Pvc Pipe
40	WASTE	40mm Pvc Pipe
41	WASTE	40mm Pvc Pipe
42	WASTE	40mm Pvc Pipe
43	WASTE	40mm Pvc Pipe
44	WASTE	40mm Pvc Pipe
45	WASTE	40mm Pvc Pipe
46	WASTE	40mm Pvc Pipe
47	WASTE	40mm Pvc Pipe
48	WASTE	40mm Pvc Pipe
49	WASTE	40mm Pvc Pipe
50	WASTE	40mm Pvc Pipe

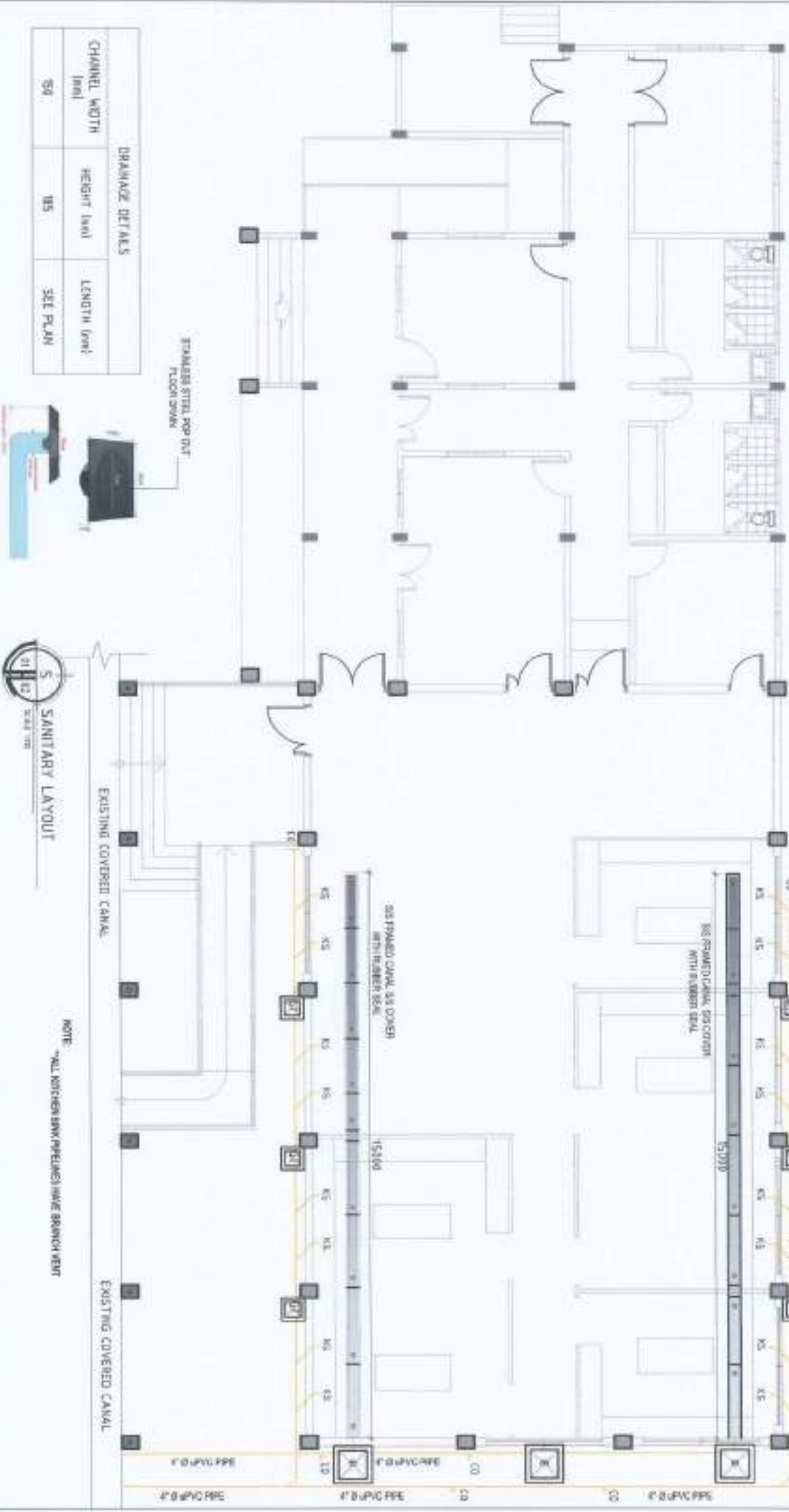
INSPECTION BOX DETAILS



GREASE TRAP DETAILS



PROJECT TITLE & LOCATION	PREPARED BY	DESIGNED & SUBMITTED BY	DESIGNED BY	RECOMMENDING APPROVAL	APPROVED BY	SHEET NO.
UPGRADING OF THE FOOD PROCESSING FACILITY BALL ROOM, 11th STREET, ANSONIA, ILLINOIS	ANDREW TOURE & LIMAD	ANDREW D. ROBINSON JR. CIVIL ENGINEER	JYNUUS J. D. CALVERNE CIVIL ENGINEER	ARVIN P. HERNANDEZ CIVIL ENGINEER	DANIEL P. VAKIL CIVIL ENGINEER	WENCESLAO A. GAMALLO JR. CIVIL ENGINEER
						P-1 3



DRAINAGE DETAILS

CHANNEL WIDTH (in)	HEIGHT (in)	LENGTH (in)
54	185	SEE PLAN



NOTE: ALL KITCHEN SINK PIPELINES HAVE BRANCH WENT

PROJECT TITLE & LOCATION: **UPGRADING OF THE FOOD PROCESSING FACILITY**
 NSBU 4870 SOUTH STATE STREET, JOHNSON CITY

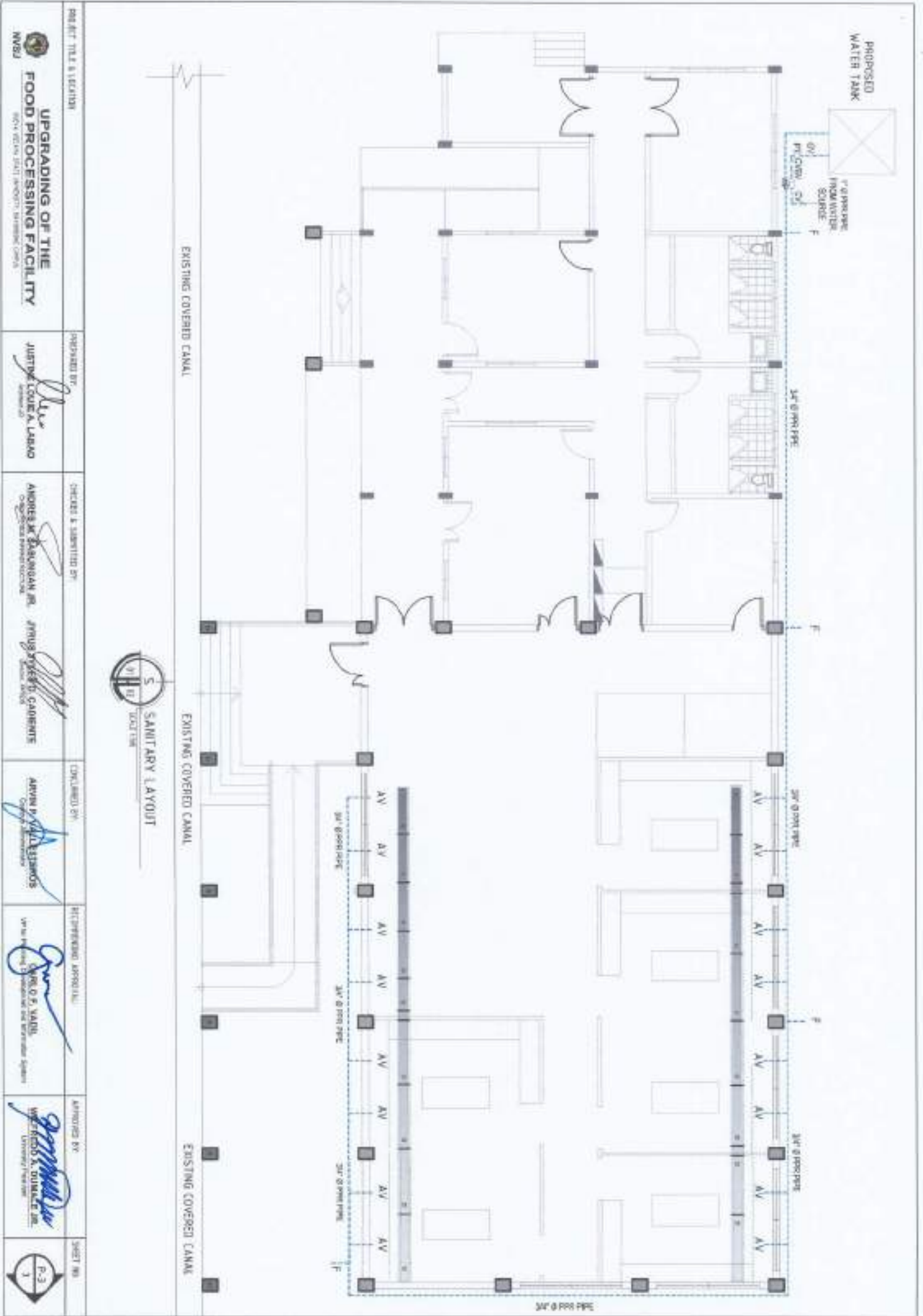
DESIGNED BY: **ANDRES M. SALASCAN JR.**
 ENGINEER

CHECKED BY: **ANDRES M. SALASCAN JR.**
 ENGINEER

APPROVED BY: **WALTER A. CARRALL JR.**
 ENGINEER

DATE: 01/12/2023

SHEET NO: **P-2**



EXISTING COVERED CANAL

EXISTING COVERED CANAL

EXISTING COVERED CANAL



PROJECT TITLE & LOCATION

UPGRADING OF THE FOOD PROCESSING FACILITY
 NWSJ

DESIGNED BY

Justine Louie A. Labao
 JUSTINE LOUIE A. LABAO

CHECKED & SUBMITTED BY

Andres M. Balangnan Jr.
 ANDRES M. BALANGAN JR.
Arnis M. Cabante
 ARNIS M. CABANTE

CONFERRED BY

Arvin B. Valdesano
 ARVIN B. VALDESANO

REVIEWING APPROVAL

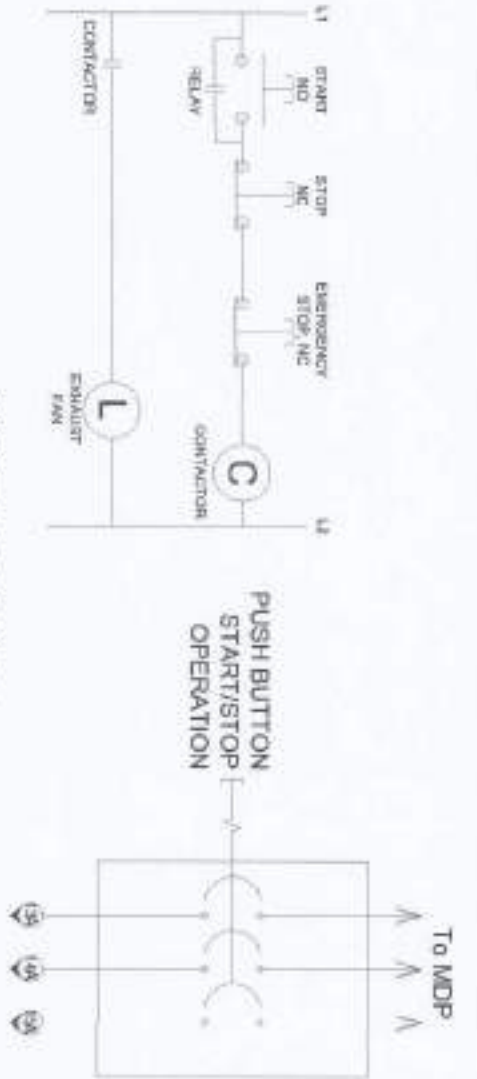
Enzo O. Valde
 ENZO O. VALDE

APPROVED BY

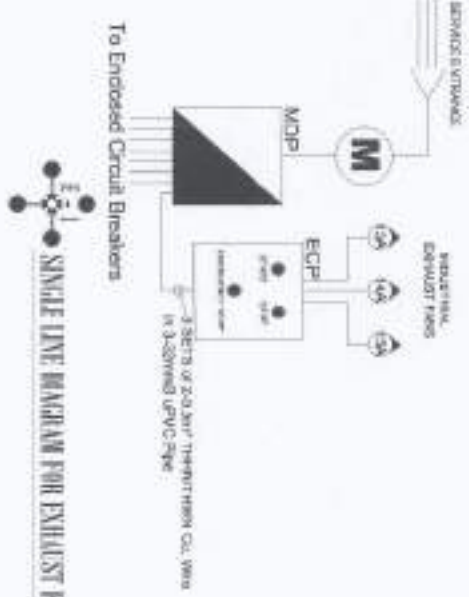
Armando A. Duarte Jr.
 ARMANDO A. DUARTE JR.

SHEET NO.

P-3
 1



ECP SCHEMATIC DIAGRAM

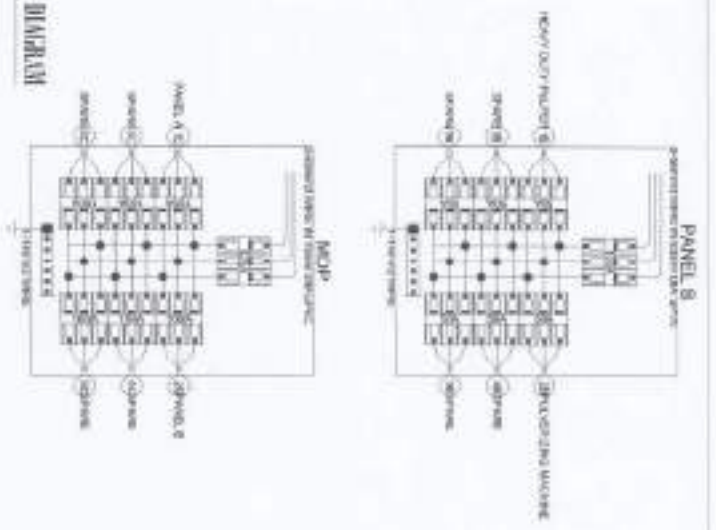
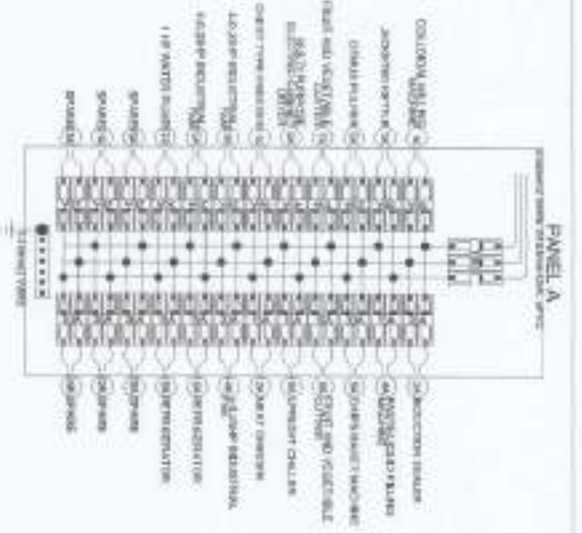


SINGLE LINE DIAGRAM FOR EXHAUST FANS



SINGLE LINE DIAGRAM

DESIGNED & DRAWN BY: PROJECT TITLE & LOCATION: WSPANNING OF THE FOOD PROCESSING FACILITY MARICOR, MARICOR AVENUE, MARICOR INDUSTRIAL ZONE, MARICOR, CALABARZON, PHILIPPINES	PREPARED BY: APPROVED BY: CHECKED BY: 	CONSULTANT BY: RECOMMENDING AUTHORITY: APPROVED BY: 	SHEET NO: E2 5
---	---	---	------------------------------------



1. ALL WORK SHALL BE IN ACCORDANCE WITH THE NATIONAL ELECTRICAL CODE, LOCAL ORDINANCES AND ALL APPLICABLE REGULATIONS.
2. THE CONTRACTOR SHALL BE RESPONSIBLE FOR OBTAINING ALL NECESSARY PERMITS AND APPROVALS FROM THE LOCAL AUTHORITIES.
3. ALL MATERIALS AND EQUIPMENT SHALL BE NEW, UNLESS OTHERWISE SPECIFIED, AND SHALL BE INSTALLED IN ACCORDANCE WITH THE NATIONAL ELECTRICAL CODE AND ALL APPLICABLE REGULATIONS.
4. THE CONTRACTOR SHALL BE RESPONSIBLE FOR OBTAINING ALL NECESSARY PERMITS AND APPROVALS FROM THE LOCAL AUTHORITIES.
5. ALL WORK SHALL BE COMPLETED WITHIN THE SPECIFIED TIME FRAME.
6. THE CONTRACTOR SHALL BE RESPONSIBLE FOR OBTAINING ALL NECESSARY PERMITS AND APPROVALS FROM THE LOCAL AUTHORITIES.
7. ALL WORK SHALL BE COMPLETED WITHIN THE SPECIFIED TIME FRAME.
8. THE CONTRACTOR SHALL BE RESPONSIBLE FOR OBTAINING ALL NECESSARY PERMITS AND APPROVALS FROM THE LOCAL AUTHORITIES.
9. ALL WORK SHALL BE COMPLETED WITHIN THE SPECIFIED TIME FRAME.
10. THE CONTRACTOR SHALL BE RESPONSIBLE FOR OBTAINING ALL NECESSARY PERMITS AND APPROVALS FROM THE LOCAL AUTHORITIES.
11. ALL WORK SHALL BE COMPLETED WITHIN THE SPECIFIED TIME FRAME.
12. THE CONTRACTOR SHALL BE RESPONSIBLE FOR OBTAINING ALL NECESSARY PERMITS AND APPROVALS FROM THE LOCAL AUTHORITIES.
13. ALL WORK SHALL BE COMPLETED WITHIN THE SPECIFIED TIME FRAME.
14. THE CONTRACTOR SHALL BE RESPONSIBLE FOR OBTAINING ALL NECESSARY PERMITS AND APPROVALS FROM THE LOCAL AUTHORITIES.
15. ALL WORK SHALL BE COMPLETED WITHIN THE SPECIFIED TIME FRAME.

NOTE: THIS PLAN MUST BE SIGNED AND SEALED BY PROFESSIONAL ELECTRICAL ENGINEER BEFORE IMPLEMENTATION



GENERAL NOTES AND SPECIFICATIONS



SCHEDULE OF LOADS

NO.	DESCRIPTION	LOADS			TOTAL LOADS			TOTAL LOADS		
		VA	W	KVA	VA	W	KVA	VA	W	KVA
1	3-PHASE MOTOR	10000	10000	10000	10000	10000	10000	10000	10000	10000
2	LIGHTING	1000	1000	1000	1000	1000	1000	1000	1000	1000
3	CONTROL PANEL	1000	1000	1000	1000	1000	1000	1000	1000	1000
4	1-PHASE MOTOR	5000	5000	5000	5000	5000	5000	5000	5000	5000
5	1-PHASE MOTOR	3000	3000	3000	3000	3000	3000	3000	3000	3000
6	1-PHASE MOTOR	2000	2000	2000	2000	2000	2000	2000	2000	2000
7	1-PHASE MOTOR	1000	1000	1000	1000	1000	1000	1000	1000	1000
8	TOTAL	22000	22000	22000	22000	22000	22000	22000	22000	22000

DESIGNED & SEALED BY: PROJECT TITLE: ELOCACION

PREPARED BY: MARCO P. QUINTERO

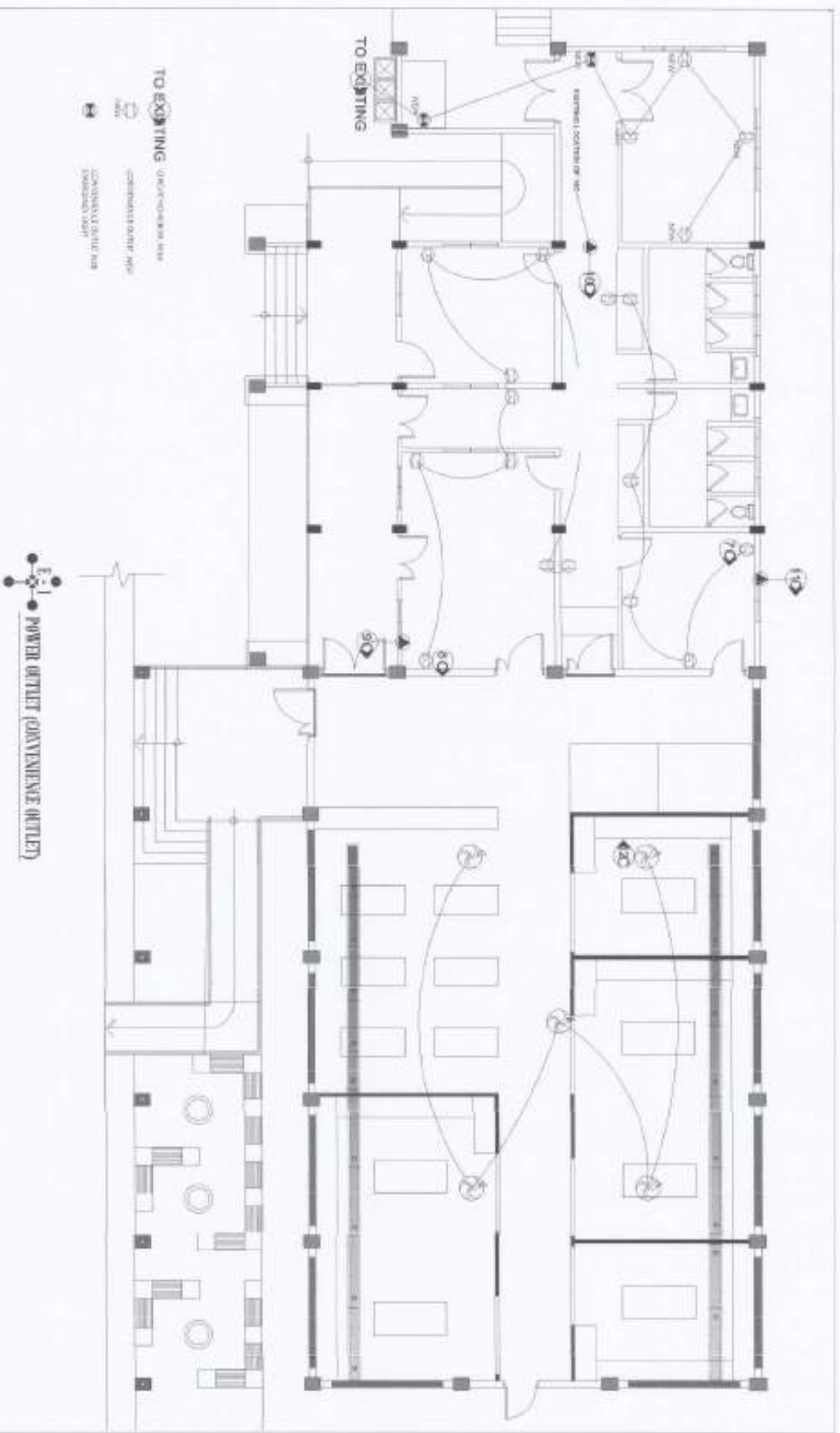
STARTED BY: JUAN P. GONZALEZ

COMPLETED BY: JUAN P. GONZALEZ

RECOMMENDED APPROVAL: JUAN P. GONZALEZ

APPROVED BY: JUAN P. GONZALEZ

SHEET NO: E3 5



TO EXISTING (UNLESS OTHERWISE NOTED)

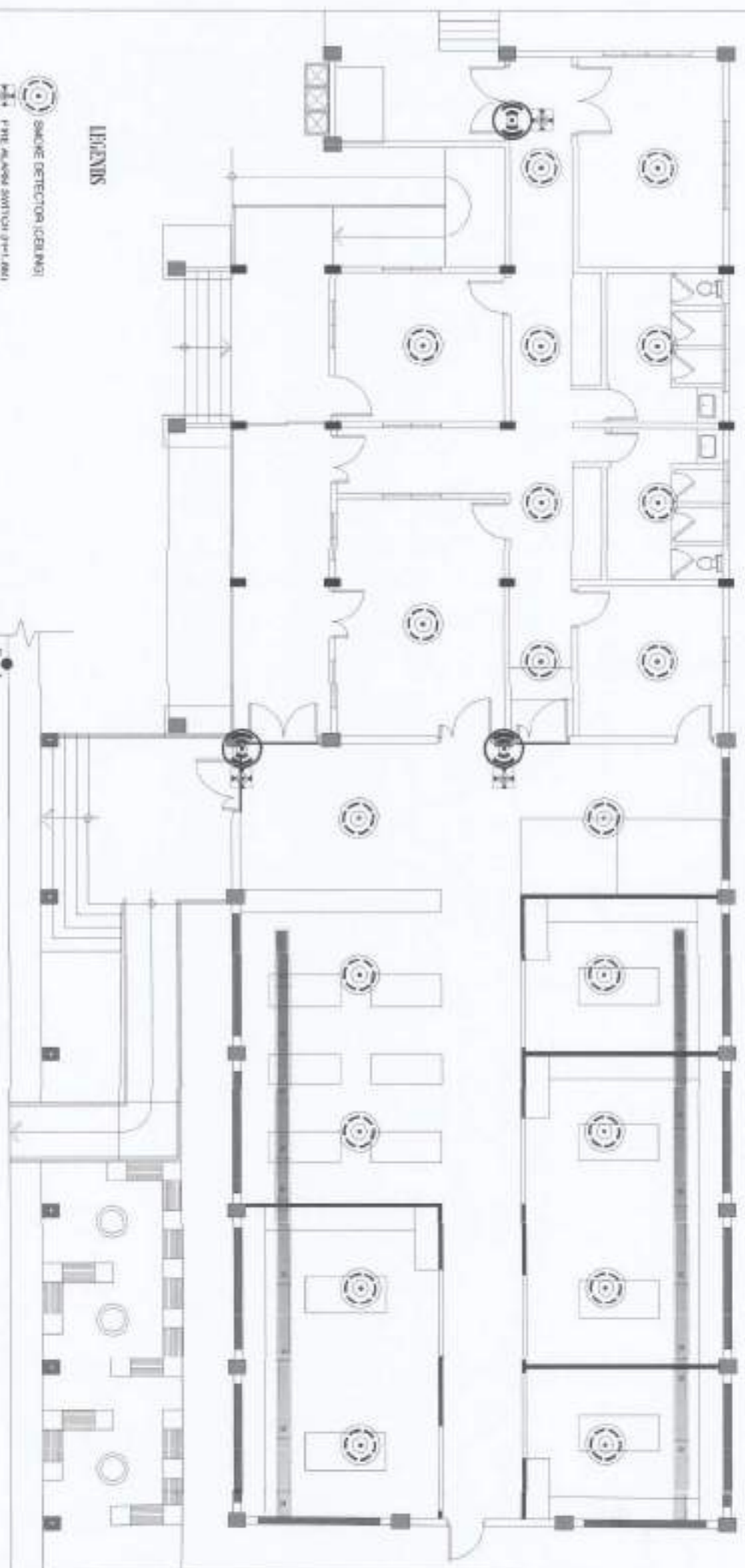
- CONDUIT ENTRY INTO ROOM
- CONDUIT ENTRY INTO EXPANSION JOINT

POWER OUTLET (GOVERNMENT OUTLET)

DRAWN BY: DATE: TITLE:	 PROJECT TITLE/LOCATION: UPGRADING OF THE FOOD PROCESSING FACILITY <small>MANAGEMENT'S STRATEGIC INITIATIVE - OPERATIONAL IMPROVEMENT</small>	PREPARED BY: HAROLD P. URRUTIA <small>ADMINISTRATIVE SERVICES DIVISION</small>	SUBMITTED BY: ANDRES B. RODRIGUEZ JR. <small>ADMINISTRATIVE SERVICES DIVISION</small>	 ANDRES B. RODRIGUEZ JR. <small>ADMINISTRATIVE SERVICES DIVISION</small>	CHECKED BY: ARMIN A. RODRIGUEZ <small>ADMINISTRATIVE SERVICES DIVISION</small>	RECOMMENDING OFFICIAL: JUAN M. GARCIA <small>ADMINISTRATIVE SERVICES DIVISION</small>	APPROVED BY: ALFREDO A. GONZALEZ JR. <small>ADMINISTRATIVE SERVICES DIVISION</small>	SHEET NO. E5 5
------------------------------	---	--	---	--	--	---	--	------------------------------------

-  SMOKE DETECTOR (CEILING)
-  FIRE ALARM STATION (F-1-001)
-  ALARM BELL (4-01-501)

LEGEND



DRAWN & SEALED BY: 	PROJECT TITLE & LOCATION: UPGRADING OF THE FOOD PROCESSING FACILITY <small>UNIVERSITY OF THE PHILIPPINES - DAVAO</small>	PROVIDED BY: 	SUBMITTED BY: 	CHECKED BY: 	RECOMMENDED APPROVAL: 	APPROVED BY: 	SHEET NO: F1
ARCHITECT: <small>PHILIPINE ARCHITECTURE ASSOCIATION</small>	CONSULTING ENGINEER: <small>PHILIPINE ENGINEERING BOARD</small>	CONTRACTOR: <small>PHILIPINE CONTRACTORS ASSOCIATION</small>	DATE: 	SCALE: 	PROJECT NO.: 	SHEET TITLE: 	